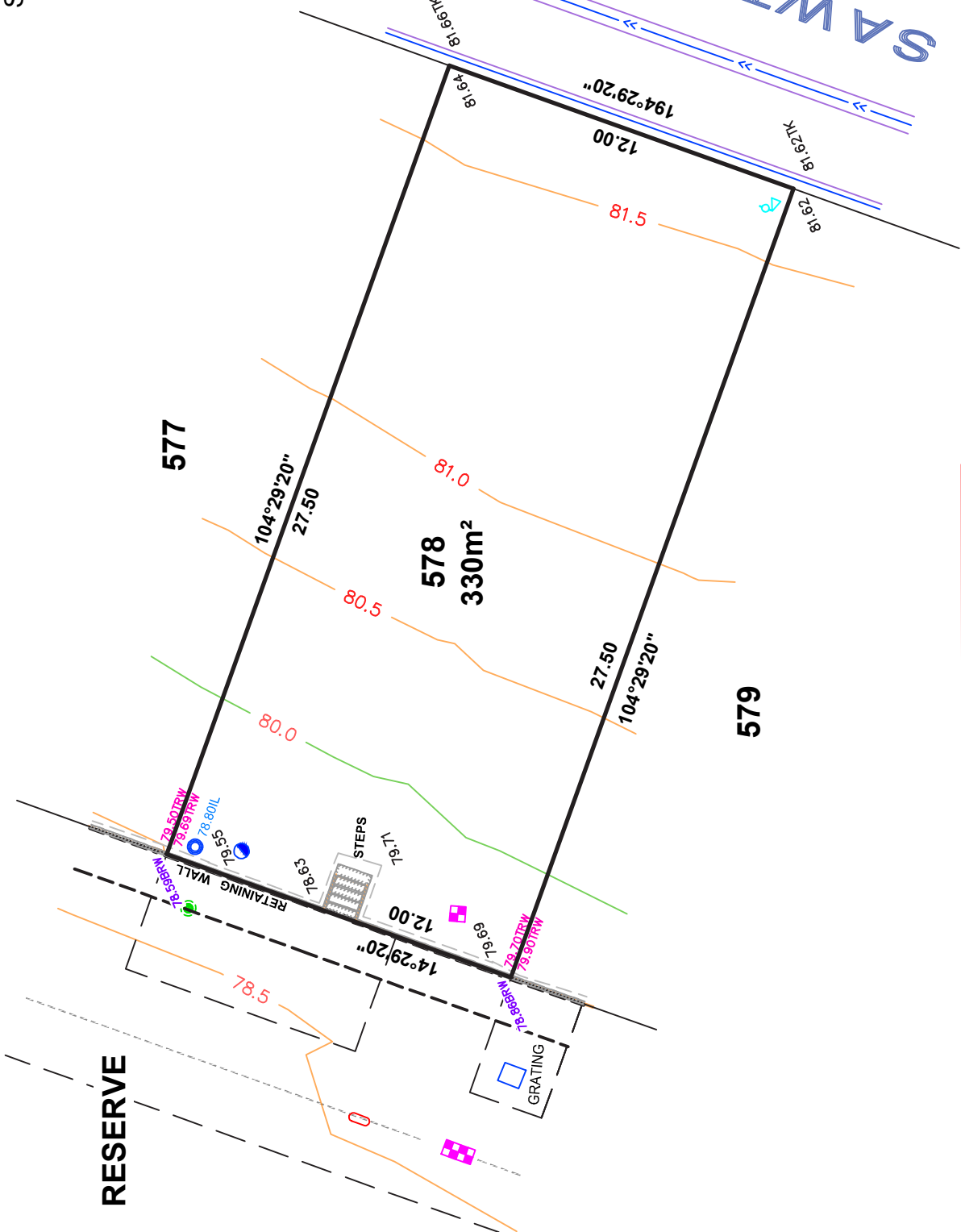


ALLOTMENT 578 in DEV. NO. 145/D215/12  
 in the area named  
**SEAFORD HEIGHTS**  
 CT ---/----

**ASCONSTRUCTED**

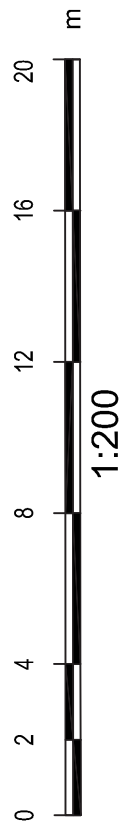
**RESERVE**



- LEGEND**
- 75.00TRW TOP OF RETAINING WALL
  - 75.00BRW BOTTOM OF RETAINING WALL
  - Water Meter
  - Sewer IP
  - Stobie Pole
  - Telstra Pit
  - S/W Grating
  - Sewer Man Hole
  - S/W Manhole
  - Light Pole
  - ETSA Connection
  - Tap
  - Bollard
  - Sign
  - S/W Connection
  - Footpath
  - Side Entry Pit
  - Common Service Trench
  - Domestic
  - Sewer IO
  - Non-potable Water Conn

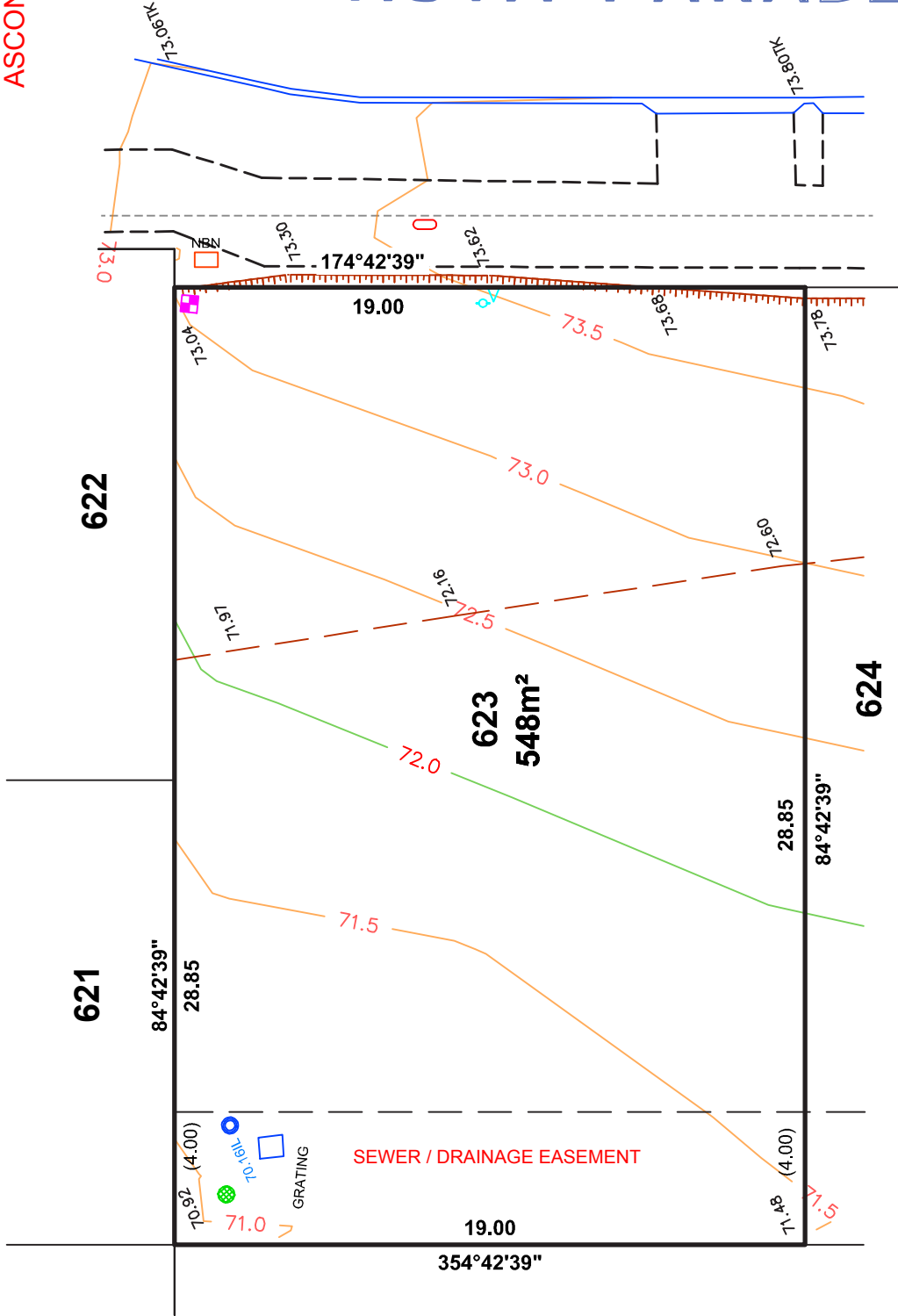
**SAWATER LANE**

**IMPORTANT**  
 SERVICE AND DRIVEWAY LOCATIONS  
 ARE SURVEYED. ANY CHANGES WILL  
 BE AT THE PURCHASERS EXPENSE.  
 PURCHASER: \_\_\_\_\_  
 DATE: \_\_\_\_\_



ALLOTMENT 623 in DEV. NO. 145/D215/12  
 in the area named  
**SEAFORD HEIGHTS**  
 CT ---/----

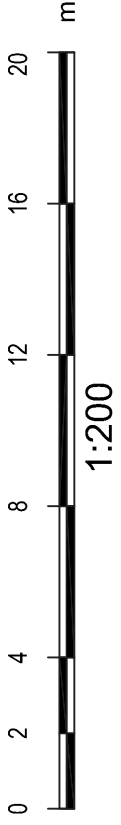
**ASCONSTRUCTED**



**LEGEND**

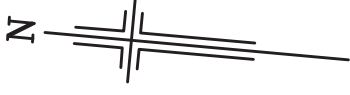
- WATER METER
- SEWER IP
- STOBIE POLE
- TELSTRA PIT
- S/W GRATING
- SEWER MAN HOLE
- S/W MANHOLE
- LIGHT POLE
- ETSA CONNECTION
- TAP
- BOLLARD
- SIGN
- S/W CONNECTION
- FOOTPATH
- SIDE ENTRY PIT
- COMMON SERVICE TRENCH
- DOMESTIC
- SEWER IO
- NON-POTABLE WATER CONN

**IMPORTANT**  
 SERVICE AND DRIVEWAY LOCATIONS  
 ARE SURVEYED. ANY CHANGES WILL  
 BE AT THE PURCHASERS EXPENSE.  
 PURCHASER: \_\_\_\_\_  
 DATE: \_\_\_\_\_



ALLOTMENT 630 in DEV. NO. 145/D215/12  
 in the area named  
 SEAFORD HEIGHTS  
 CT ---/-----

**ASCONSTRUCTED**



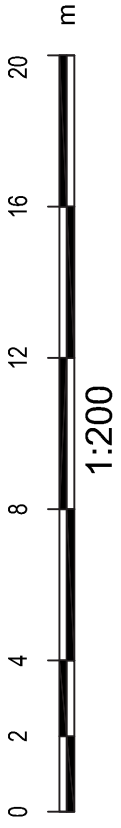
# VISTA PARADE



**LEGEND**

- WATER METER
- SEWER IP
- STOBIE POLE
- TELSTRA PIT
- S/W GRATING
- SEWER MAN HOLE
- S/W MANHOLE
- LIGHT POLE
- ETSA CONNECTION
- TAP
- BOLLARD
- SIGN
- S/W CONNECTION
- FOOTPATH
- SIDE ENTRY PIT
- COMMON SERVICE TRENCH
- DOMESTIC
- SEWER IO
- NON-POTABLE WATER CONN

**IMPORTANT**  
 SERVICE AND DRIVEWAY LOCATIONS  
 ARE SURVEYED. ANY CHANGES WILL  
 BE AT THE PURCHASERS EXPENSE.  
 PURCHASER: \_\_\_\_\_  
 DATE: \_\_\_\_\_



ALLOTMENT 633 in DEV. NO. 145/D215/12

in the area named

SEAFORD HEIGHTS

CT ---/---

ASCONSTRUCTED

IMPORTANT  
 SERVICE AND DRIVEWAY LOCATIONS  
 ARE SURVEYED. ANY CHANGES WILL  
 BE AT THE PURCHASERS EXPENSE.  
 PURCHASER: \_\_\_\_\_  
 PURCHASER: \_\_\_\_\_  
 DATE: \_\_\_\_\_



VISTA PARADE

620

619

104°29'20"

20.000

SEWER/DRAINAGE EASEMENT

77.89

(4.00)

75.67

76.04

75.91

76.0

76.5

76.04

77.0

76.79

77.16

77.89

77.37

77.89

77.89

77.89

77.89

77.89

77.89

77.89

77.89

77.89

77.89

77.89

77.89

77.89

77.89

77.89

77.89

77.89

633  
580m<sup>2</sup>

634

14°29'20"  
30.000

14°29'20"

25.20

75.96

75.96

75.96

75.96

75.96

75.96

75.96

75.96

75.96

75.96

75.96

75.96

75.96

75.96

75.96

75.96

75.96

75.96

75.96

75.96

75.96

9.61

314°23'19"

76.59

11.67

284°31'06"

77.89

77.89

77.89

77.89

77.89

77.89

77.89

77.89

NICHOLLS ROAD

LEGEND

- WATER METER
- SEWER IP
- STOBIE POLE
- TELSTRA PIT
- SW GRATING
- SEWER MAN HOLE
- SW MANHOLE
- LIGHT POLE
- ETSA CONNECTION
- TAP
- BOLLARD
- SIGN
- S/W CONNECTION
- FOOTPATH
- SIDE ENTRY PIT
- COMMON SERVICE TRENCH
- DOMESTIC
- SEWER IO
- NON-POTABLE WATER CONN



1:200

ALLOTMENT 1570 in DEV. NO. 145/D215/12

in the area named

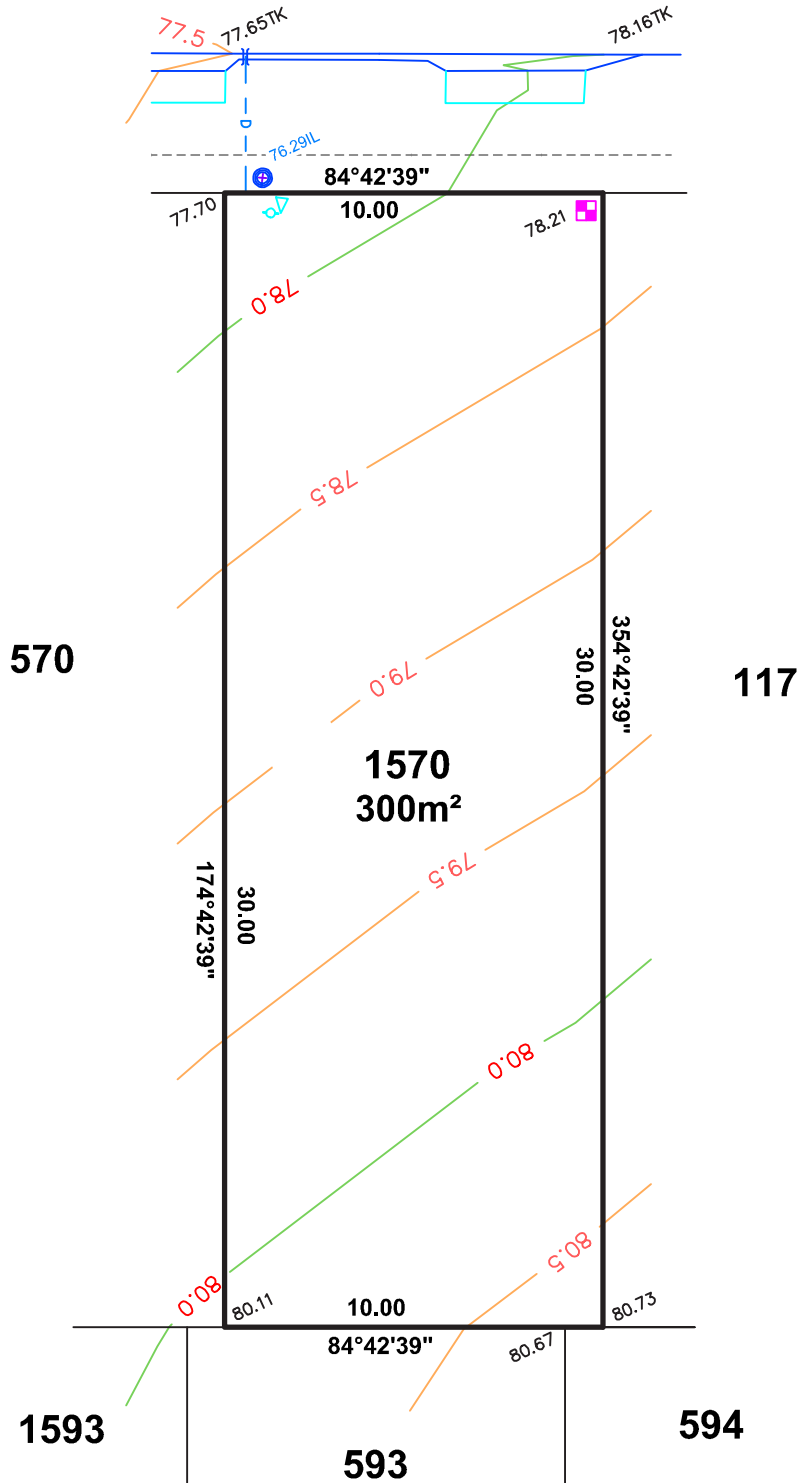
SEAFORD HEIGHTS

CT ---/---

ASCONSTRUCTED

IMPORTANT  
 SERVICE AND DRIVEWAY LOCATIONS  
 ARE SURVEYED. ANY CHANGES WILL  
 BE AT THE PURCHASERS EXPENSE.  
 PURCHASER: \_\_\_\_\_  
 PURCHASER: \_\_\_\_\_  
 DATE: \_\_\_\_\_

# EVERTON ROAD



### LEGEND

- WATER METER
- SEWER IP
- STOBIE POLE
- TELSTRA PIT
- SW GRATING
- SEWER MAN HOLE
- SW MANHOLE
- LIGHT POLE
- E TSA CONNECTION
- TAP
- BOLLARD
- SIGN
- S/W CONNECTION
- FOOTPATH
- SIDE ENTRY PIT
- COMMON SERVICE TRENCH
- DOMESTIC
- SEWER IO
- NON-POTABLE WATER CONN



1:200