

ALLOTMENT 586 in DEV. NO. 145/D215/12

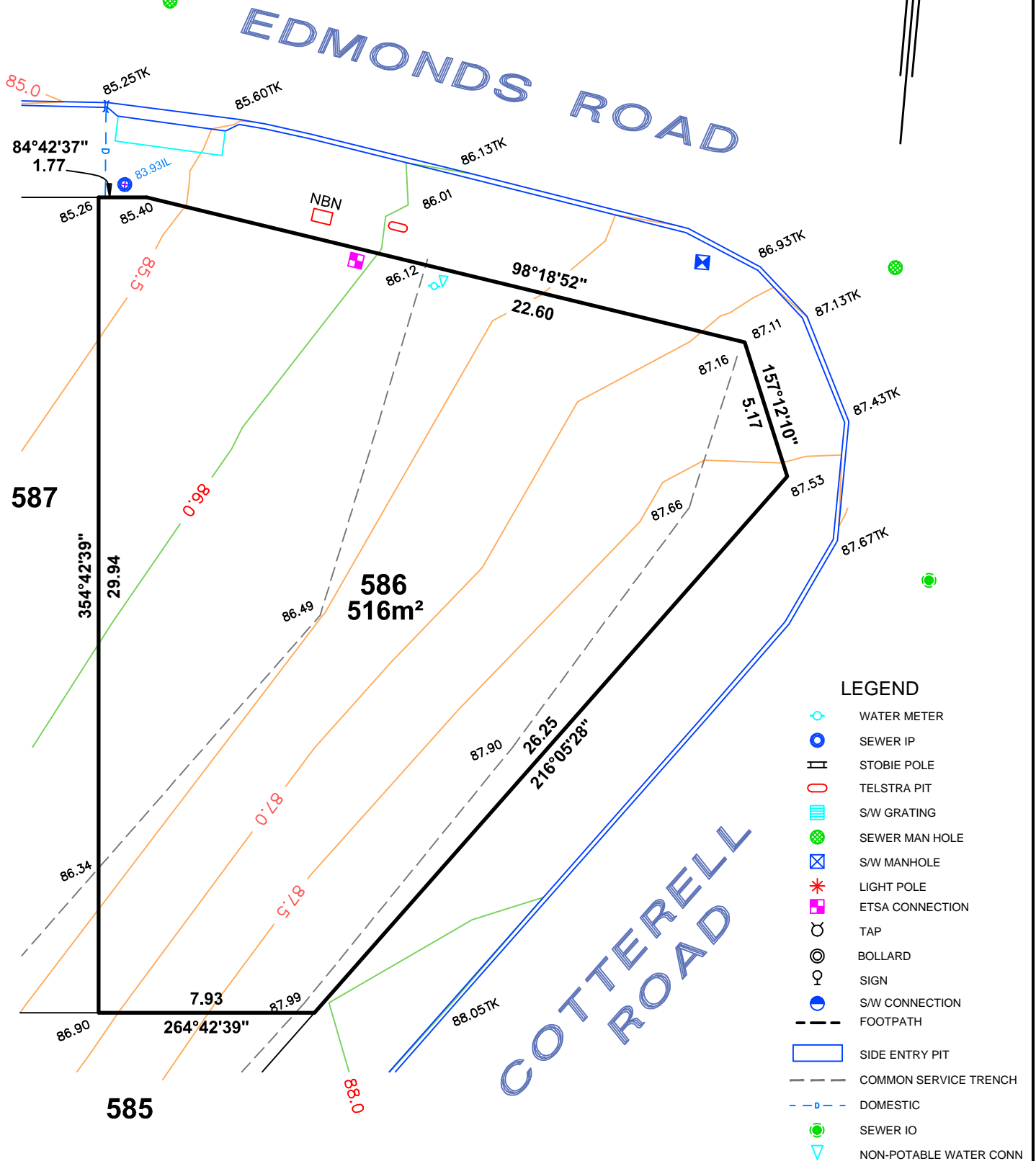
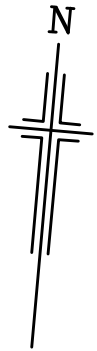
in the area named

SEAFORD HEIGHTS

CT ---/----

ASCONSTRUCTED

IMPORTANT  
 SERVICE AND DRIVEWAY LOCATIONS  
 ARE SURVEYED. ANY CHANGES WILL  
 BE AT THE PURCHASERS EXPENSE.  
 PURCHASER: \_\_\_\_\_  
 PURCHASER: \_\_\_\_\_  
 DATE: \_\_\_\_\_



1:200

ALLOTMENT 594 in DEV. NO. 145/D215/12

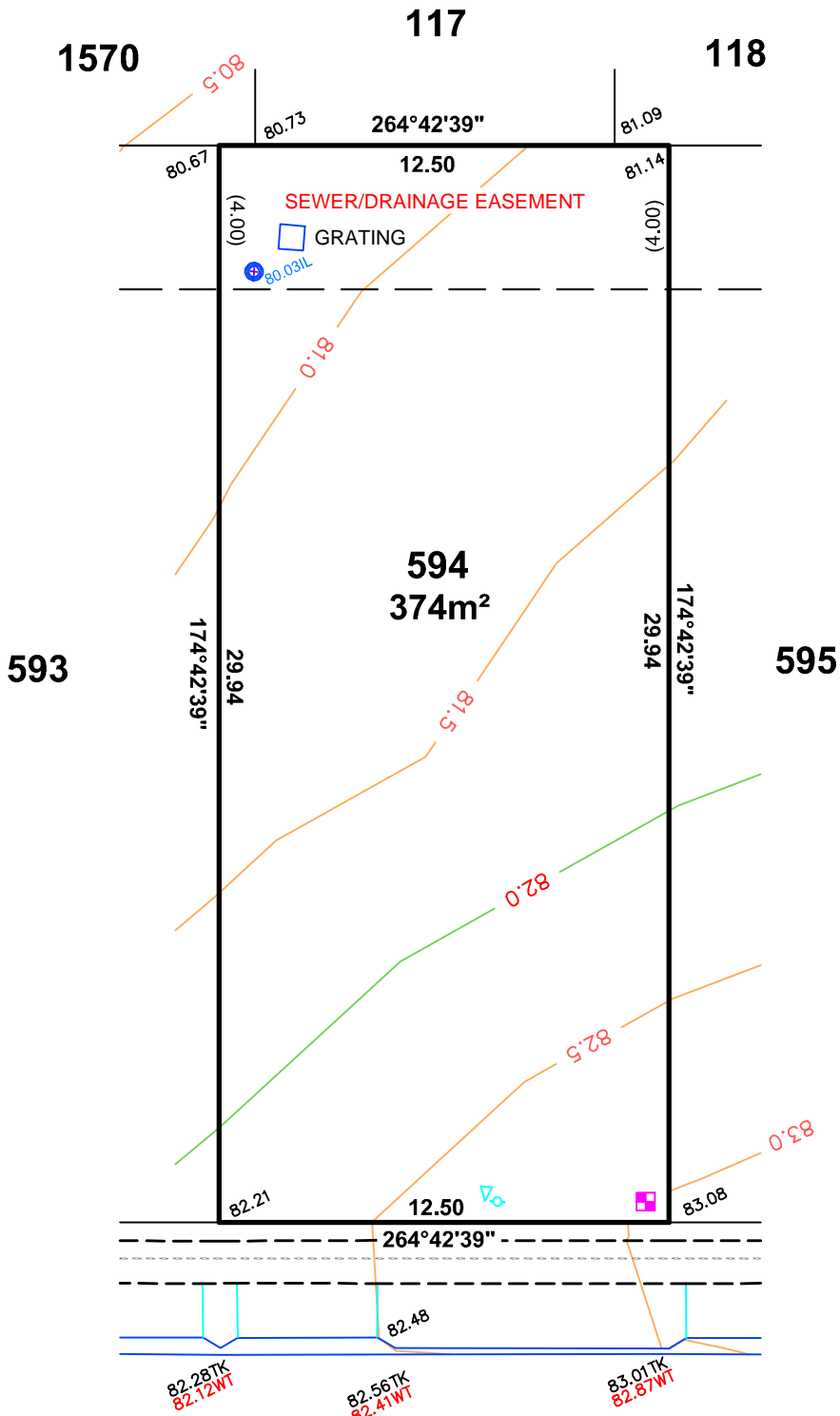
in the area named

SEAFORD HEIGHTS

CT ---/----

ASCONSTRUCTED

IMPORTANT  
 SERVICE AND DRIVEWAY LOCATIONS  
 ARE SURVEYED. ANY CHANGES WILL  
 BE AT THE PURCHASERS EXPENSE.  
 PURCHASER: \_\_\_\_\_  
 PURCHASER: \_\_\_\_\_  
 DATE: \_\_\_\_\_



EDMONDS ROAD

LEGEND

- WATER METER
- SEWER IP
- STOBIE POLE
- TELSTRA PIT
- S/W GRATING
- SEWER MAN HOLE
- S/W MANHOLE
- LIGHT POLE
- ETSA CONNECTION
- TAP
- BOLLARD
- SIGN
- S/W CONNECTION
- FOOTPATH
- SIDE ENTRY PIT
- COMMON SERVICE TRENCH
- DOMESTIC
- SEWER IO
- NON-POTABLE WATER CONN



1:200

ALLOTMENT 595 in DEV. NO. 145/D215/12

in the area named

SEAFORD HEIGHTS

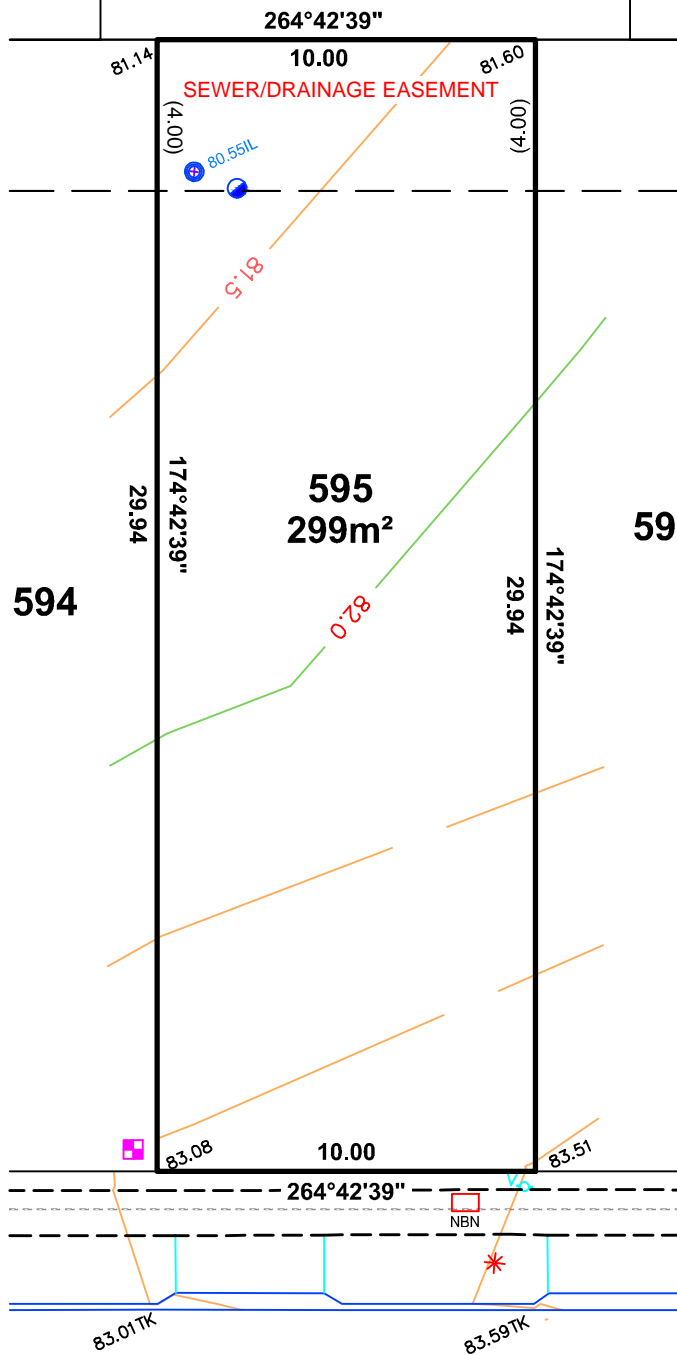
CT ---/----

ASCONSTRUCTED

IMPORTANT  
 SERVICE AND DRIVEWAY LOCATIONS  
 ARE SURVEYED. ANY CHANGES WILL  
 BE AT THE PURCHASERS EXPENSE.  
 PURCHASER: \_\_\_\_\_  
 PURCHASER: \_\_\_\_\_  
 DATE: \_\_\_\_\_



117                      118                      119



**EDMONDS ROAD**

**LEGEND**

- WATER METER
- SEWER IP
- STOBIE POLE
- TELSTRA PIT
- SW GRATING
- SEWER MAN HOLE
- SW MANHOLE
- LIGHT POLE
- ETSA CONNECTION
- TAP
- BOLLARD
- SIGN
- S/W CONNECTION
- FOOTPATH
- SIDE ENTRY PIT
- COMMON SERVICE TRENCH
- DOMESTIC
- SEWER IO
- NON-POTABLE WATER CONN



ALLOTMENT 596 in DEV. NO. 145/D215/12

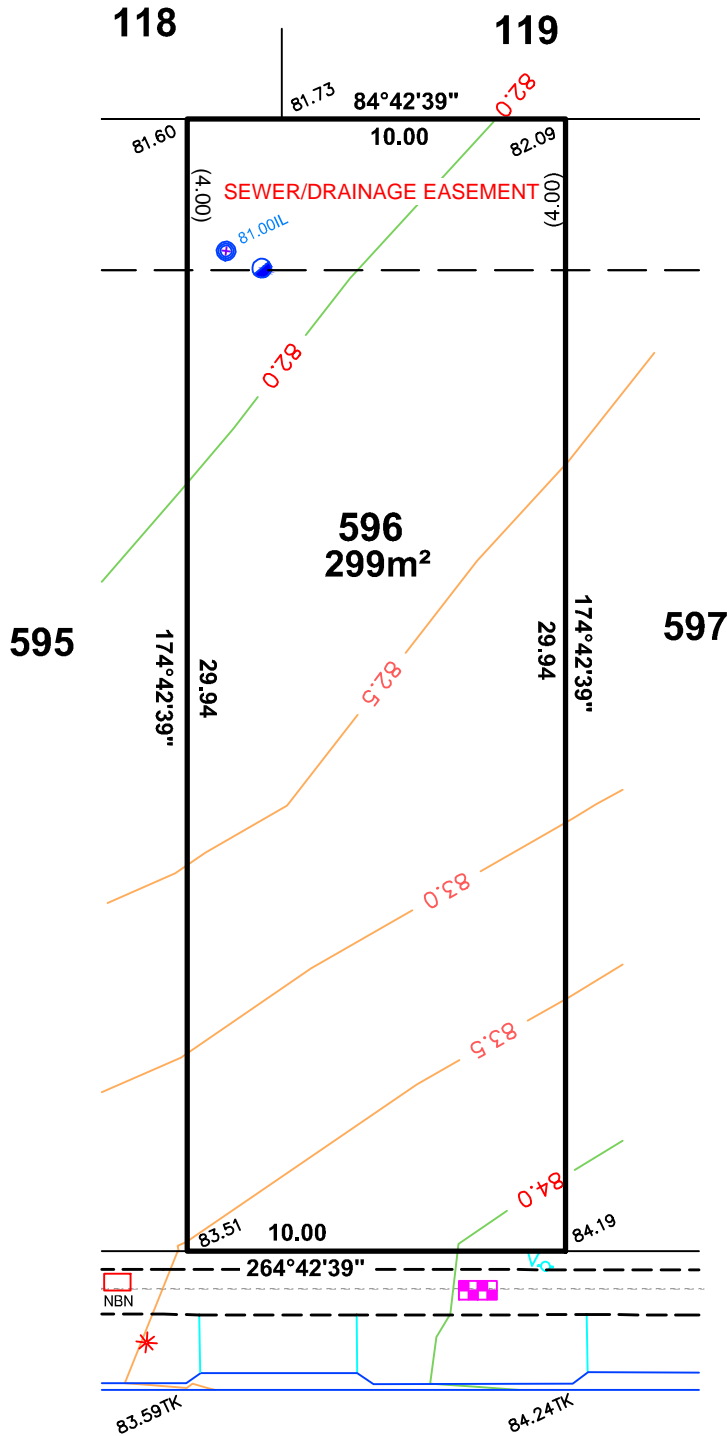
in the area named

SEAFORD HEIGHTS

CT ---/----

ASCONSTRUCTED

IMPORTANT  
 SERVICE AND DRIVEWAY LOCATIONS  
 ARE SURVEYED. ANY CHANGES WILL  
 BE AT THE PURCHASERS EXPENSE.  
 PURCHASER: \_\_\_\_\_  
 PURCHASER: \_\_\_\_\_  
 DATE: \_\_\_\_\_



EDMONDS ROAD

LEGEND

- WATER METER
- SEWER IP
- STOBIE POLE
- TELSTRA PIT
- S/W GRATING
- SEWER MAN HOLE
- S/W MANHOLE
- LIGHT POLE
- ETSA CONNECTION
- TAP
- BOLLARD
- SIGN
- S/W CONNECTION
- FOOTPATH
- SIDE ENTRY PIT
- COMMON SERVICE TRENCH
- DOMESTIC
- SEWER IO
- NON-POTABLE WATER CONN



1:200

ALLOTMENT 597 in DEV. NO. 145/D215/12

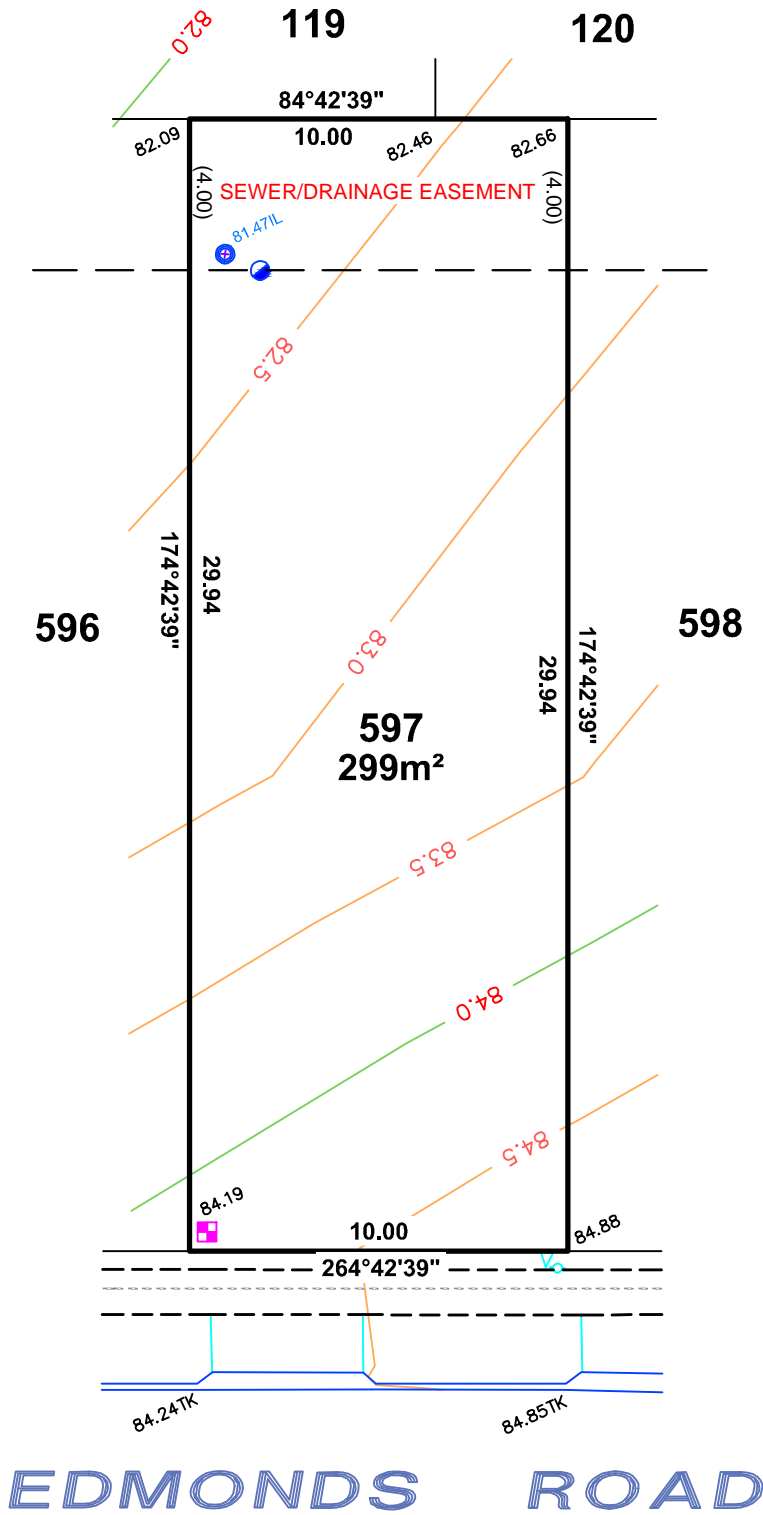
in the area named

SEAFORD HEIGHTS

CT ---/----

ASCONSTRUCTED

IMPORTANT  
 SERVICE AND DRIVEWAY LOCATIONS  
 ARE SURVEYED. ANY CHANGES WILL  
 BE AT THE PURCHASERS EXPENSE.  
 PURCHASER: \_\_\_\_\_  
 PURCHASER: \_\_\_\_\_  
 DATE: \_\_\_\_\_



LEGEND

- WATER METER
- SEWER IP
- STOBIE POLE
- TELSTRA PIT
- S/W GRATING
- SEWER MAN HOLE
- S/W MANHOLE
- LIGHT POLE
- ETSA CONNECTION
- TAP
- BOLLARD
- SIGN
- S/W CONNECTION
- FOOTPATH
- SIDE ENTRY PIT
- COMMON SERVICE TRENCH
- DOMESTIC
- SEWER IO
- NON-POTABLE WATER CONN



1:200

ALLOTMENT 598 in DEV. NO. 145/D215/12

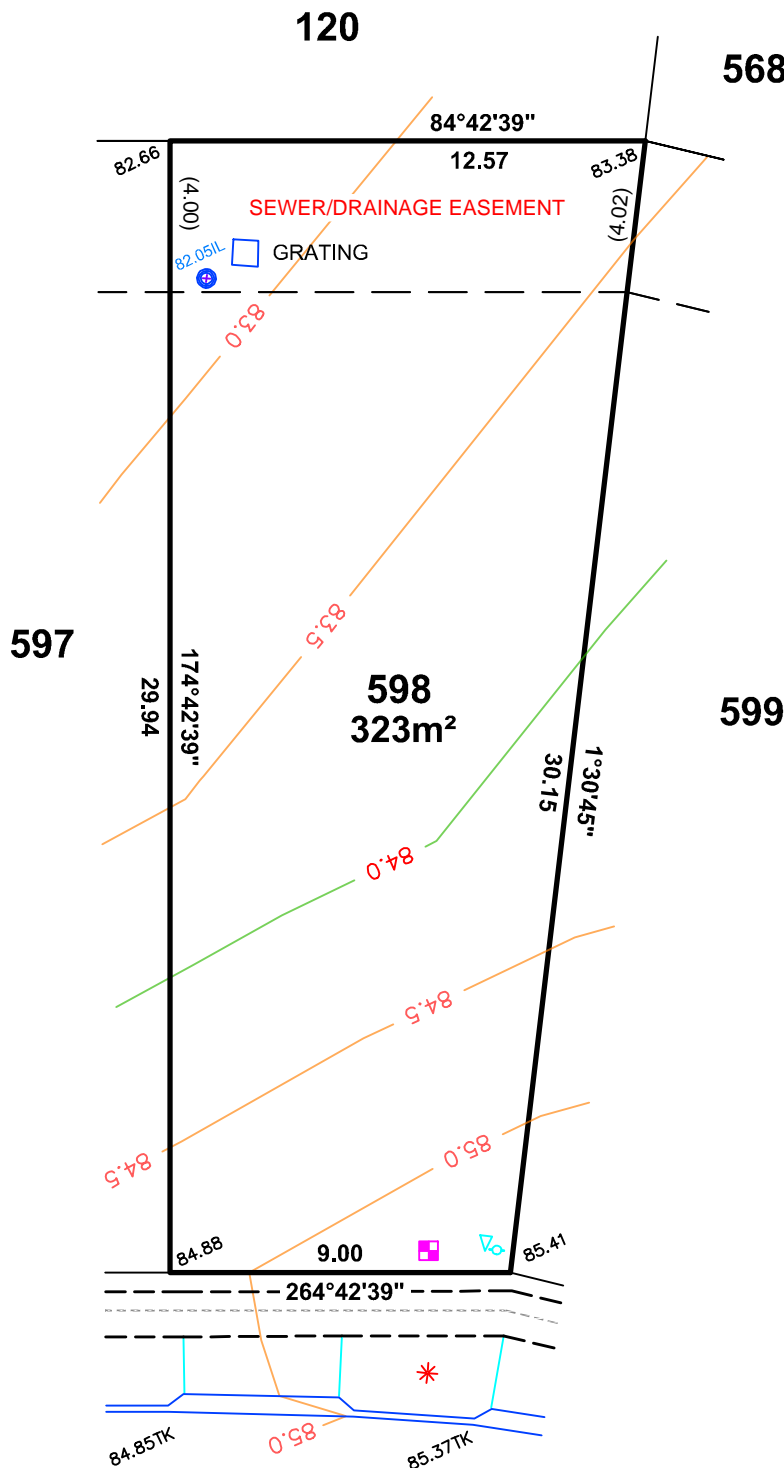
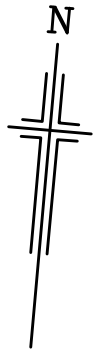
in the area named

SEAFORD HEIGHTS

CT ---/----

ASCONSTRUCTED

**IMPORTANT**  
 SERVICE AND DRIVEWAY LOCATIONS  
 ARE SURVEYED. ANY CHANGES WILL  
 BE AT THE PURCHASERS EXPENSE.  
 PURCHASER: \_\_\_\_\_  
 PURCHASER: \_\_\_\_\_  
 DATE: \_\_\_\_\_



**LEGEND**

- WATER METER
- SEWER IP
- STOBIE POLE
- TELSTRA PIT
- S/W GRATING
- SEWER MAN HOLE
- S/W MANHOLE
- LIGHT POLE
- ETSA CONNECTION
- TAP
- BOLLARD
- SIGN
- S/W CONNECTION
- FOOTPATH
- SIDE ENTRY PIT
- COMMON SERVICE TRENCH
- DOMESTIC
- SEWER IO
- NON-POTABLE WATER CONN

**EDMONDS ROAD**



1:200

ALLOTMENT 599 in DEV. NO. 145/D215/12

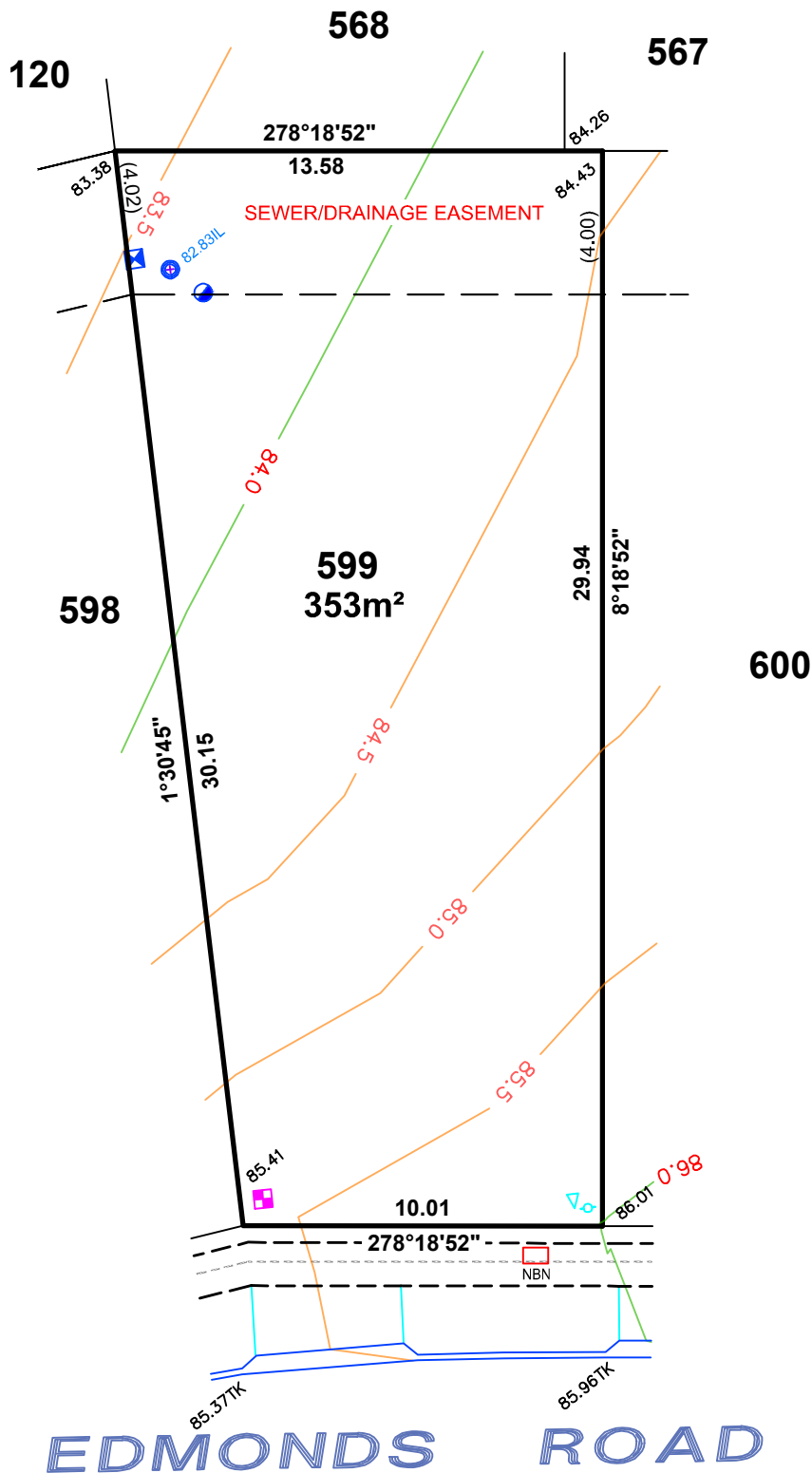
in the area named

SEAFORD HEIGHTS

CT ---/----

ASCONSTRUCTED

IMPORTANT  
SERVICE AND DRIVEWAY LOCATIONS  
ARE SURVEYED. ANY CHANGES WILL  
BE AT THE PURCHASERS EXPENSE.  
PURCHASER: \_\_\_\_\_  
PURCHASER: \_\_\_\_\_  
DATE: \_\_\_\_\_



LEGEND

- WATER METER
- SEWER IP
- STOBIE POLE
- TELSTRA PIT
- SW GRATING
- SEWER MAN HOLE
- SW MANHOLE
- LIGHT POLE
- ETSa CONNECTION
- TAP
- BOLLARD
- SIGN
- S/W CONNECTION
- FOOTPATH
- SIDE ENTRY PIT
- COMMON SERVICE TRENCH
- DOMESTIC
- SEWER IO
- NON-POTABLE WATER CONN

EDMONDS ROAD



1:200

ALLOTMENT 600 in DEV. NO. 145/D215/12

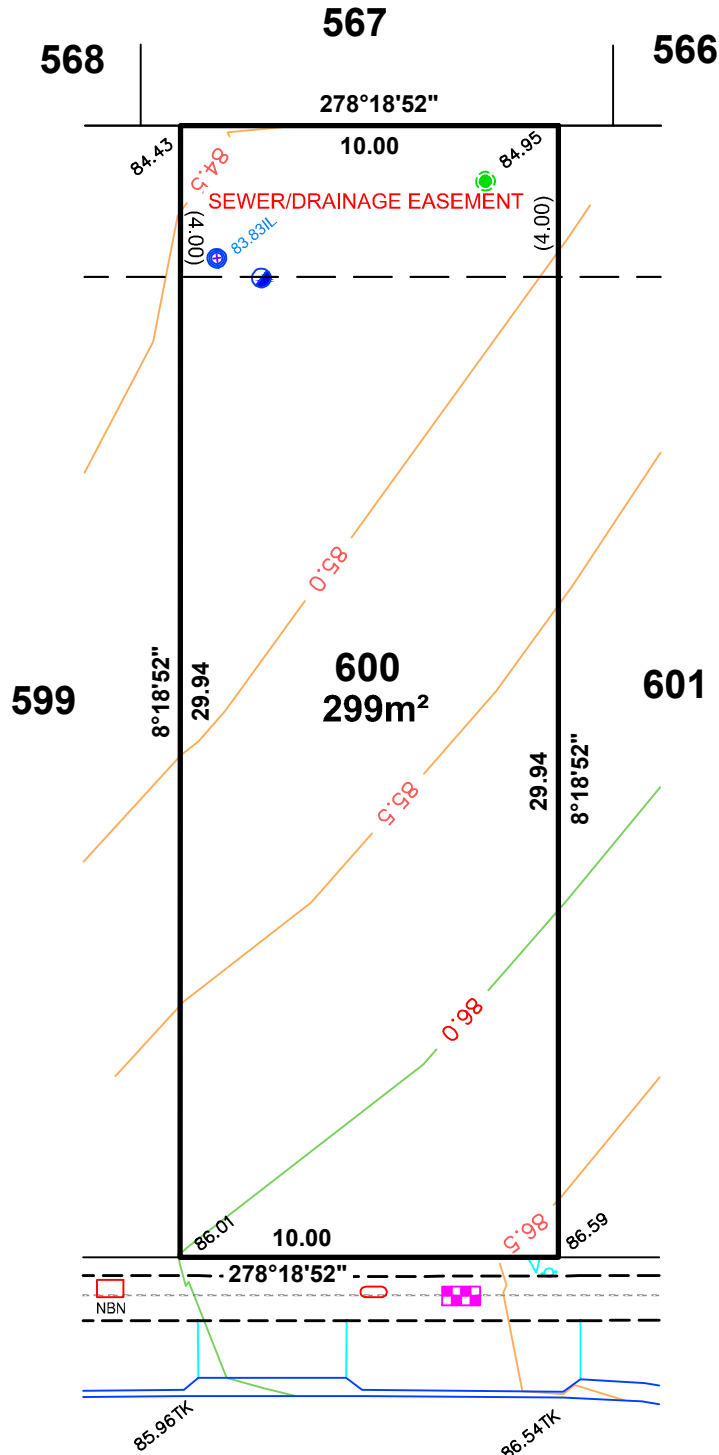
in the area named

SEAFORD HEIGHTS

CT ---/----

ASCONSTRUCTED

IMPORTANT  
 SERVICE AND DRIVEWAY LOCATIONS  
 ARE SURVEYED. ANY CHANGES WILL  
 BE AT THE PURCHASERS EXPENSE.  
 PURCHASER: \_\_\_\_\_  
 PURCHASER: \_\_\_\_\_  
 DATE: \_\_\_\_\_



LEGEND

- WATER METER
- SEWER IP
- STOBIE POLE
- TELSTRA PIT
- S/W GRATING
- SEWER MAN HOLE
- S/W MANHOLE
- LIGHT POLE
- ETSA CONNECTION
- TAP
- BOLLARD
- SIGN
- S/W CONNECTION
- FOOTPATH
- SIDE ENTRY PIT
- COMMON SERVICE TRENCH
- DOMESTIC
- SEWER IO
- NON-POTABLE WATER CONN

EDMONDS ROAD



1:200



ALLOTMENT 601 in DEV. NO. 145/D215/12

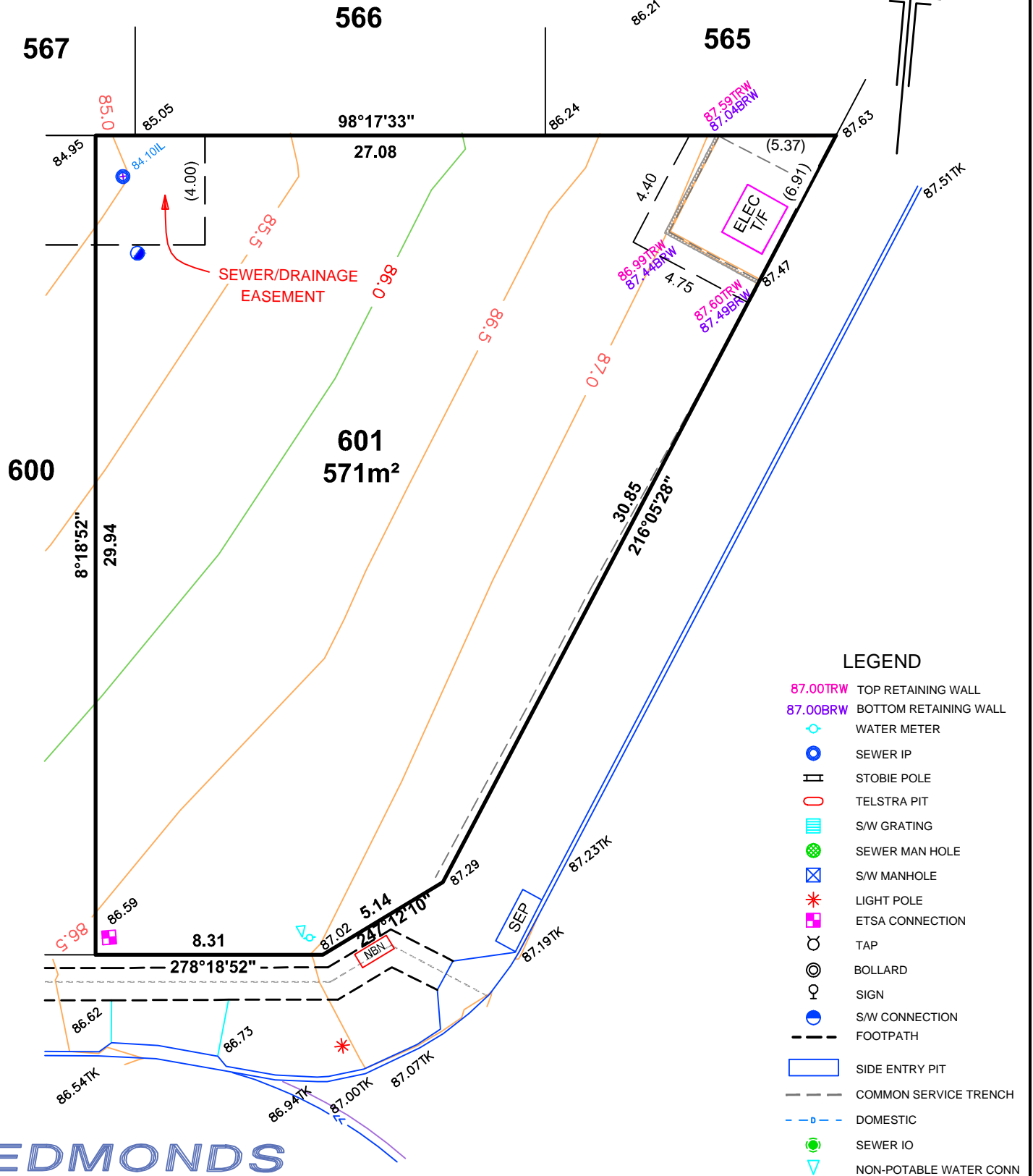
in the area named

SEAFORD HEIGHTS

CT ---/----

ASCONSTRUCTED

IMPORTANT  
 SERVICE AND DRIVEWAY LOCATIONS  
 ARE SURVEYED. ANY CHANGES WILL  
 BE AT THE PURCHASERS EXPENSE.  
 PURCHASER: \_\_\_\_\_  
 PURCHASER: \_\_\_\_\_  
 DATE: \_\_\_\_\_



LEGEND

- 87.00TRW TOP RETAINING WALL
- 87.00BRW BOTTOM RETAINING WALL
- WATER METER
- SEWER IP
- ▧ STOBIE POLE
- TELSTRA PIT
- ▨ SW GRATING
- SEWER MAN HOLE
- ⊠ SW MANHOLE
- \* LIGHT POLE
- ETSA CONNECTION
- TAP
- BOLLARD
- SIGN
- S/W CONNECTION
- FOOTPATH
- ▭ SIDE ENTRY PIT
- COMMON SERVICE TRENCH
- - - DOMESTIC
- SEWER IO
- ▽ NON-POTABLE WATER CONN

EDMONDS ROAD



1:200

ALEXANDER SYMONDS  
PH 8130 1666