

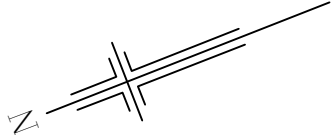
ALLOTMENT 256 in DEV. NO. 145/D135/12  
in the area named  
SEAFORD HEIGHTS  
CT ---/-----

**PRELIMINARY**

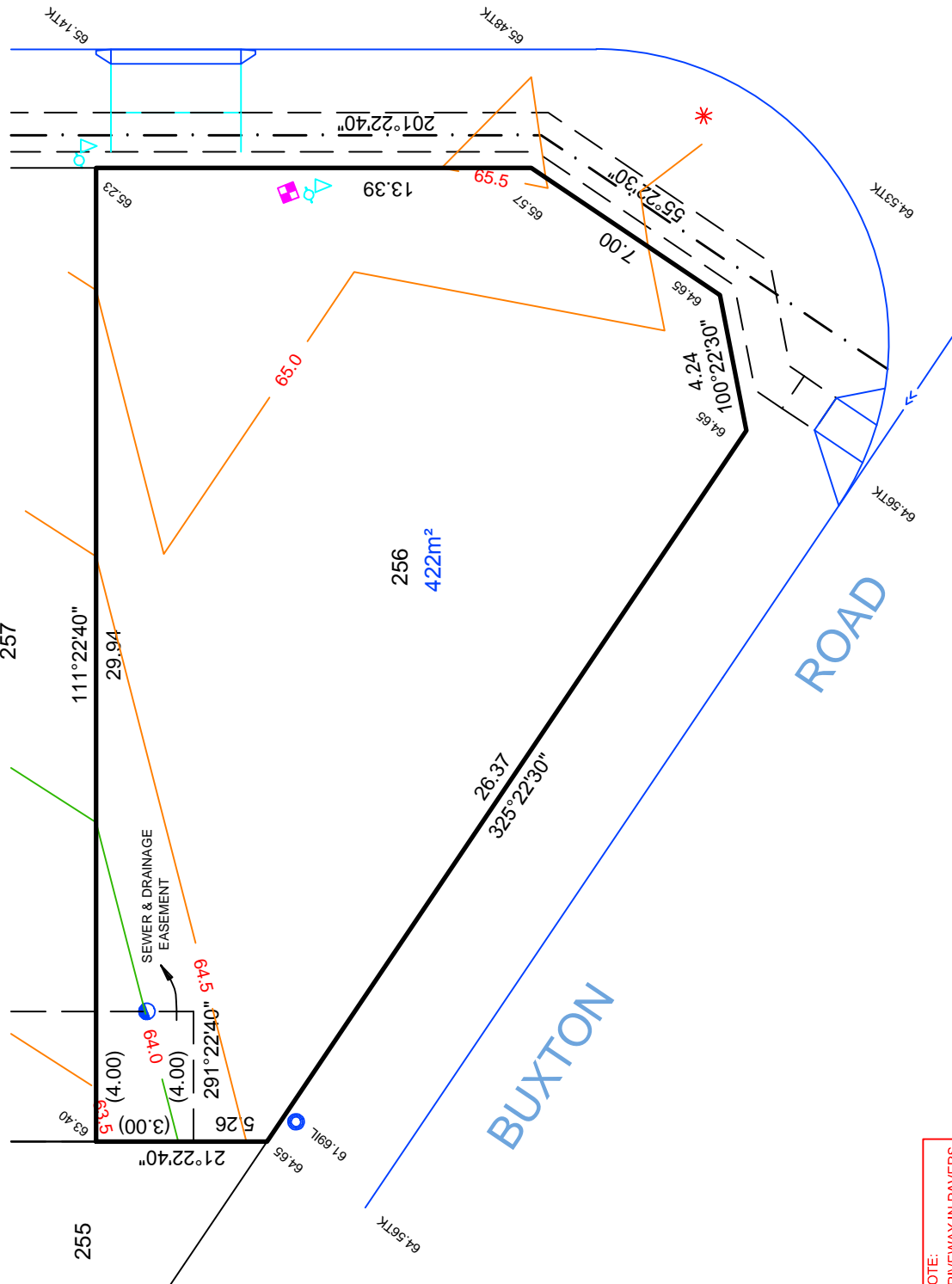
OLIPHANT ROAD



1:200



- LEGEND**
- WATER METER
  - SEWER IP
  - STOBIE POLE
  - TELSTRA PIT
  - S/W GRATING
  - SEWER MAN HOLE
  - S/W MANHOLE
  - LIGHT POLE
  - ETSA CONNECTION
  - BOLLARD
  - SIGN
  - S/W CONNECTION
  - FOOTPATH
  - SIDE ENTRY PIT
  - COMMON SERVICE TRENCH
  - DOMESTIC
  - SEWER IO
  - NON-POTABLE WATER CONN



ROAD

BUXTON ROAD

256  
422m<sup>2</sup>

**IMPORTANT**  
SERVICE AND DRIVEWAY LOCATIONS  
ARE APPROXIMATE. ANY CHANGES WILL  
BE AT THE PURCHASERS EXPENSE.  
PURCHASER: \_\_\_\_\_  
PURCHASER: \_\_\_\_\_  
DATE: \_\_\_\_\_

**NOTE:**  
DRIVEWAY IN PAVERS  
BY DEVELOPER

ALEXANDER SYMONDS  
PH (08) 8130 1666  
REF.: A000114.0000 STAGE 1D

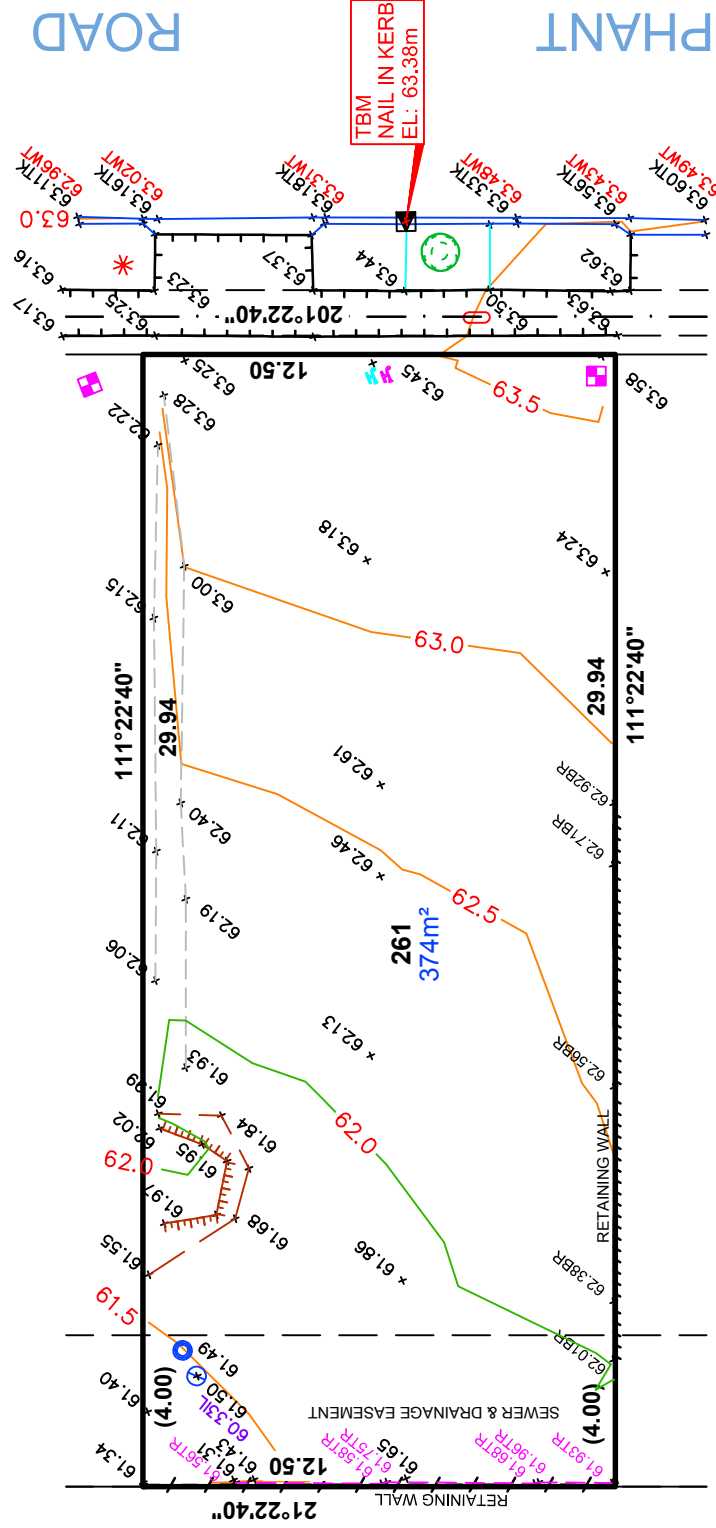
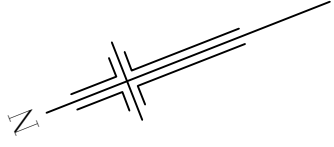
DISCLAIMER: DATA SHOWN HEREON IS DESIGN INFORMATION AND SHOULD BE CONFIRMED  
ORIGINAL SHEET SIZE A4

ALLOTMENT 261 in DEV. NO. 145/D135/12  
 in the area named  
 SEAFORD HEIGHTS  
 CT 6160/495

**AS CONSTRUCTED**

262

260



- LEGEND**
- POTABLE WATER
  - NON-POTABLE WATER
  - SEWER IP
  - STOBIE POLE
  - TELSTRA PIT
  - S/W GRATING
  - SEWER MAN HOLE
  - S/W MANHOLE
  - LIGHT POLE
  - ETSA CONNECTION
  - BOLLARD
  - SIGN
  - S/W CONNECTION
  - FOOTPATH
  - SIDE ENTRY PIT
  - COMMON SERVICE TRENCH
  - DOMESTIC
  - SEWER IO
  - BR
  - TR
  - BOTTOM OF RETAINING WALL
  - TOP OF RETAINING WALL

