

ALLOTMENT 428 in DEV. NO. 145/D215/12

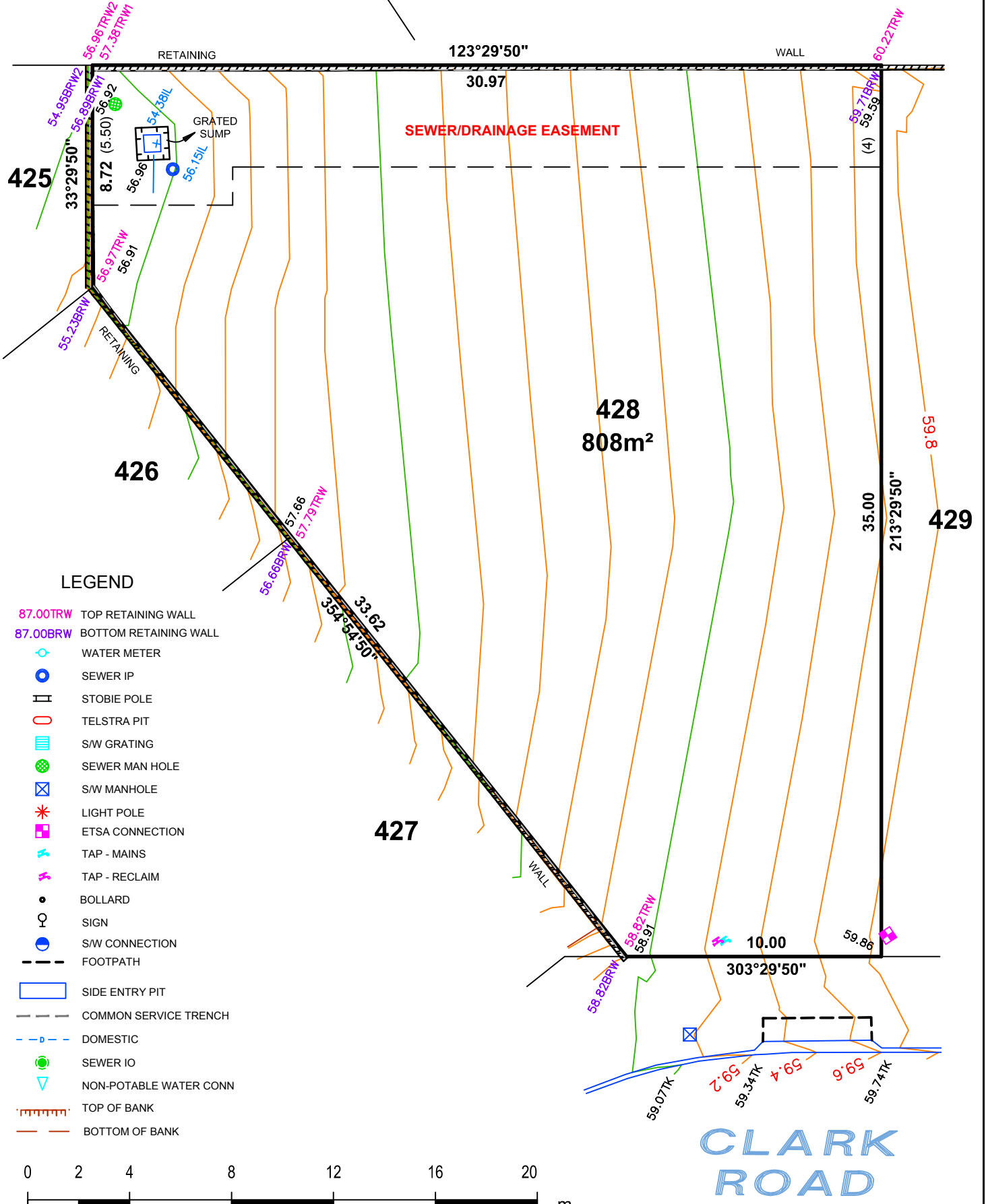
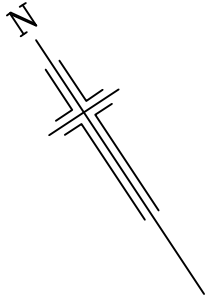
in the area named

SEAFORD HEIGHTS

CT ---/---

ASCONSTRUCTED

**IMPORTANT**  
 SERVICE AND DRIVEWAY LOCATIONS  
 ARE SURVEYED. ANY CHANGES WILL  
 BE AT THE PURCHASERS EXPENSE.  
 PURCHASER: \_\_\_\_\_  
 PURCHASER: \_\_\_\_\_  
 DATE: \_\_\_\_\_



ALLOTMENT 429 in DEV. NO. 145/D215/12

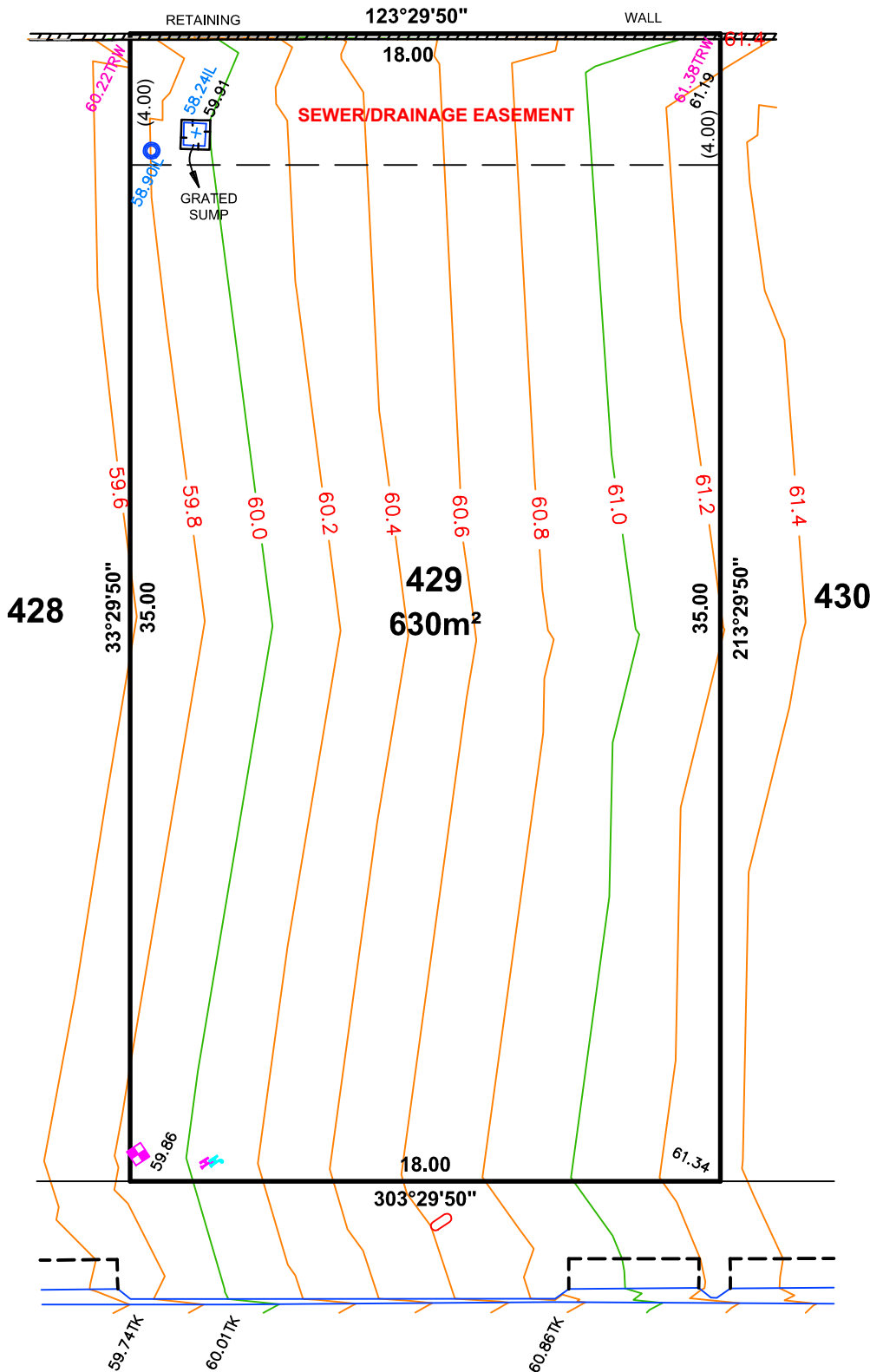
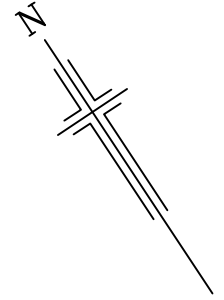
in the area named

SEAFORD HEIGHTS

CT ---/---

ASCONSTRUCTED

IMPORTANT  
 SERVICE AND DRIVEWAY LOCATIONS  
 ARE SURVEYED. ANY CHANGES WILL  
 BE AT THE PURCHASERS EXPENSE.  
 PURCHASER: \_\_\_\_\_  
 PURCHASER: \_\_\_\_\_  
 DATE: \_\_\_\_\_



LEGEND

- 87.00TRW TOP RETAINING WALL
- 87.00BRW BOTTOM RETAINING WALL
- Water Meter
- Sewer IP
- STOBIE POLE
- TELSTRA PIT
- S/W GRATING
- SEWER MAN HOLE
- S/W MANHOLE
- LIGHT POLE
- ETSA CONNECTION
- TAP - MAINS
- TAP - RECLAIM
- BOLLARD
- SIGN
- S/W CONNECTION
- FOOTPATH
- SIDE ENTRY PIT
- COMMON SERVICE TRENCH
- DOMESTIC
- SEWER IO
- NON-POTABLE WATER CONN
- TOP OF BANK
- BOTTOM OF BANK



1:200

CLARK ROAD

ALLOTMENT 430 in DEV. NO. 145/D215/12

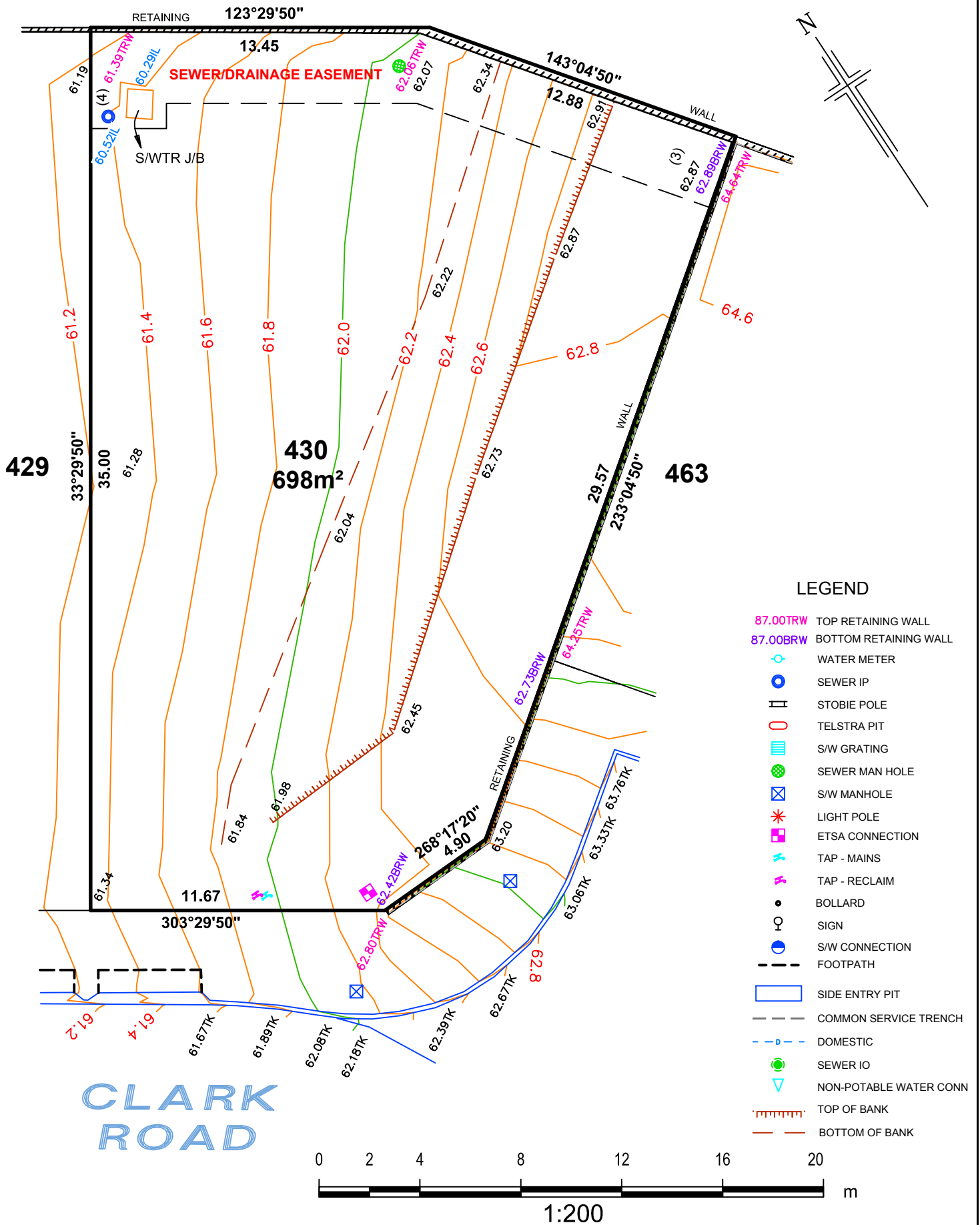
in the area named

SEAFORD HEIGHTS

CT ---/---

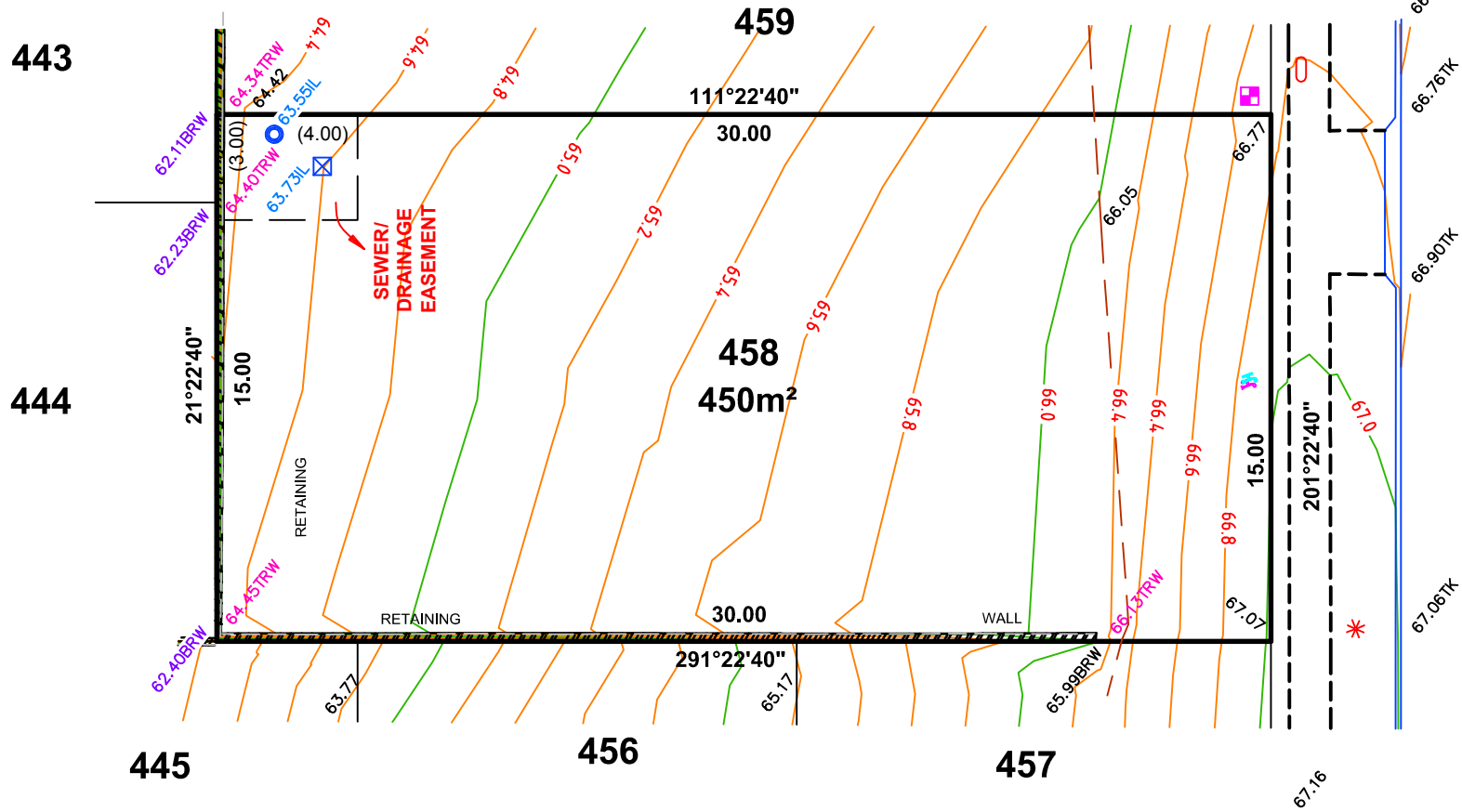
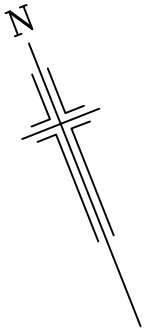
ASCONSTRUCTED

IMPORTANT  
 SERVICE AND DRIVEWAY LOCATIONS  
 ARE SURVEYED. ANY CHANGES WILL  
 BE AT THE PURCHASERS EXPENSE.  
 PURCHASER: \_\_\_\_\_  
 PURCHASER: \_\_\_\_\_  
 DATE: \_\_\_\_\_



ALLOTMENT 458 in DEV. NO. 145/D215/12  
in the area named  
**SEAFORD HEIGHTS**  
CT ---/----

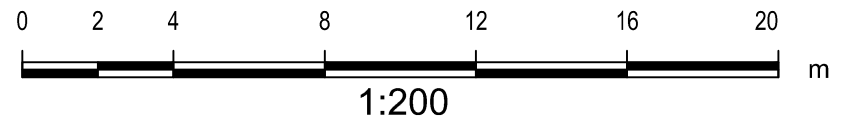
**ASCONSTRUCTED**



**LEGEND**

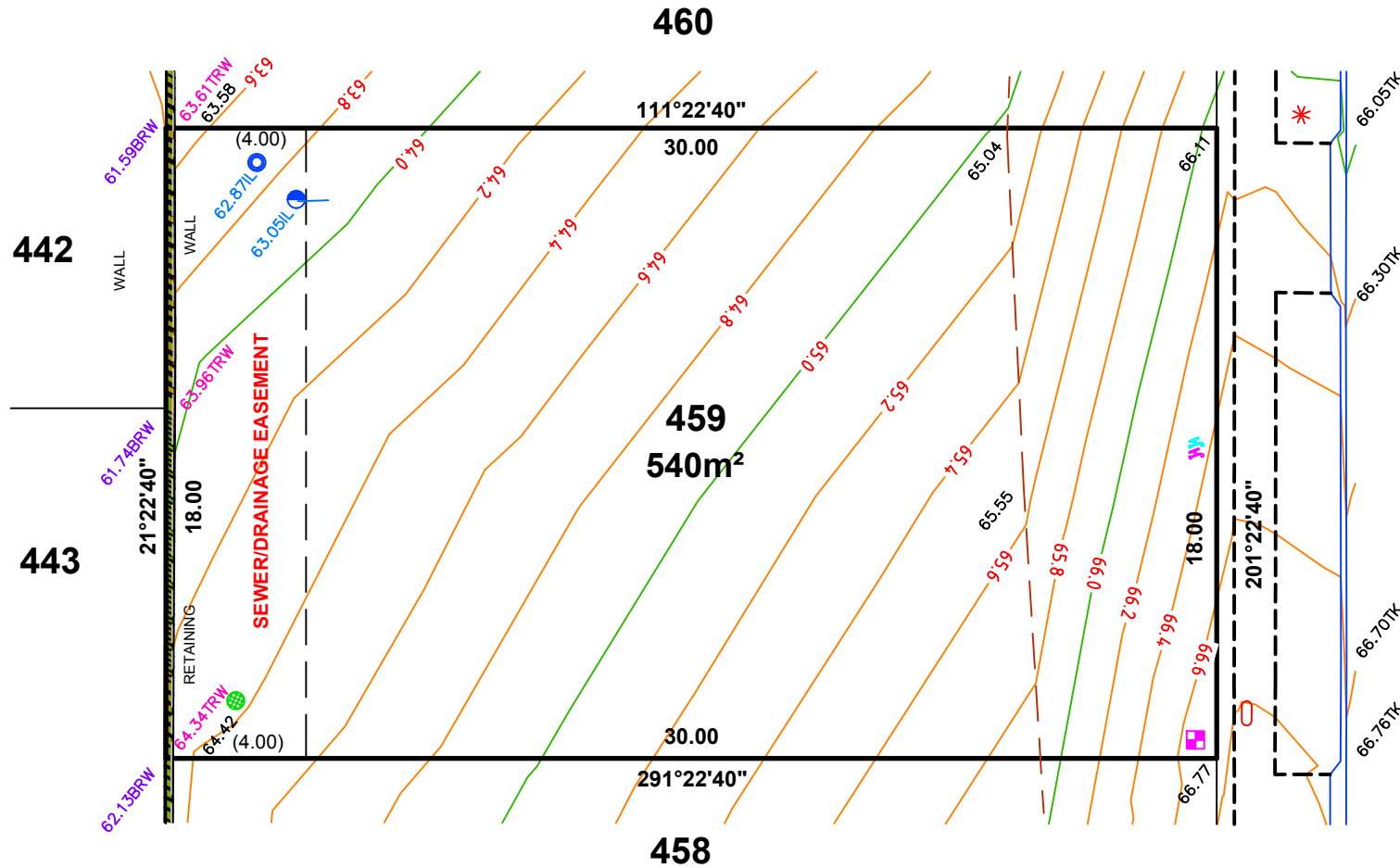
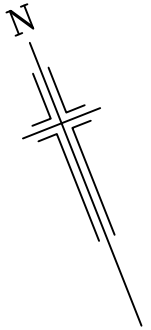
- 87.00TRW TOP RETAINING WALL
- 87.00BRW BOTTOM RETAINING WALL
- WATER METER
- SEWER IP
- STOBIE POLE
- TELSTRA PIT
- S/W GRATING
- SEWER MAN HOLE
- S/W MANHOLE
- LIGHT POLE
- ETSA CONNECTION
- TAP - MAINS
- TAP - RECLAIM
- BOLLARD
- SIGN
- S/W CONNECTION
- FOOTPATH
- SIDE ENTRY PIT
- COMMON SERVICE TRENCH
- DOMESTIC
- SEWER IO
- NON-POTABLE WATER CONN
- TOP OF BANK
- BOTTOM OF BANK

**IMPORTANT**  
SERVICE AND DRIVEWAY LOCATIONS  
ARE SURVEYED. ANY CHANGES WILL  
BE AT THE PURCHASERS EXPENSE.  
PURCHASER: \_\_\_\_\_  
PURCHASER: \_\_\_\_\_  
DATE: \_\_\_\_\_



ALLOTMENT 459 in DEV. NO. 145/D215/12  
in the area named  
**SEAFORD HEIGHTS**  
CT ---/---

**ASCONSTRUCTED**



**GOYDER ROAD**

**LEGEND**

- 87.00TRW TOP RETAINING WALL
- 87.00BRW BOTTOM RETAINING WALL
- WATER METER
- SEWER IP
- STOBIE POLE
- TELSTRA PIT
- S/W GRATING
- SEWER MAN HOLE
- S/W MANHOLE
- LIGHT POLE
- ETSA CONNECTION
- TAP - MAINS
- TAP - RECLAIM
- BOLLARD
- SIGN
- S/W CONNECTION
- FOOTPATH
- SIDE ENTRY PIT
- COMMON SERVICE TRENCH
- DOMESTIC
- SEWER IO
- NON-POTABLE WATER CONN
- TOP OF BANK
- BOTTOM OF BANK

**IMPORTANT**

SERVICE AND DRIVEWAY LOCATIONS  
ARE SURVEYED. ANY CHANGES WILL  
BE AT THE PURCHASERS EXPENSE.

PURCHASER: \_\_\_\_\_

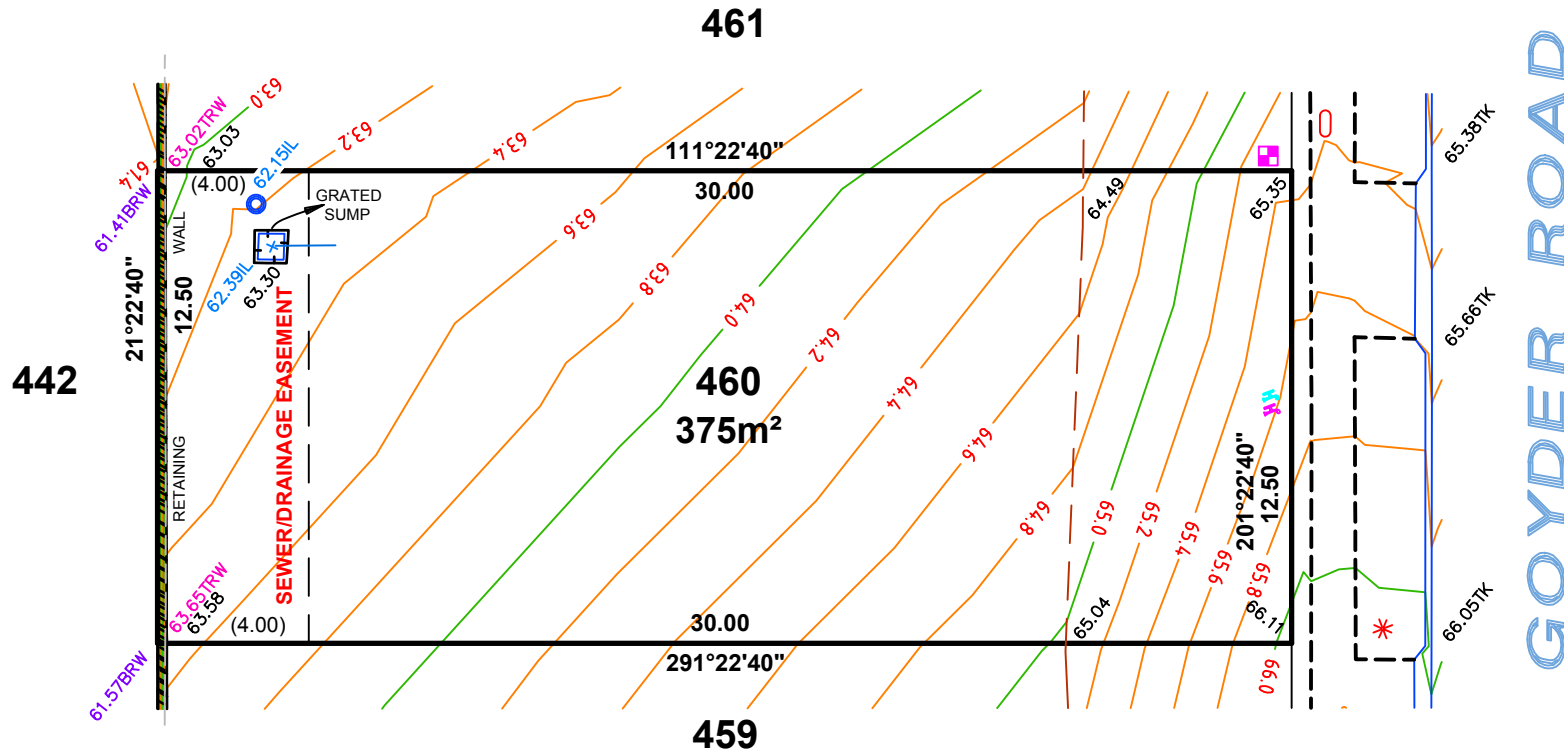
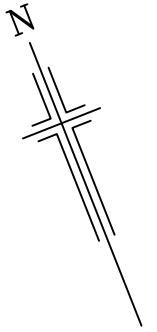
PURCHASER: \_\_\_\_\_

DATE: \_\_\_\_\_



ALLOTMENT 460 in DEV. NO. 145/D215/12  
in the area named  
**SEAFORD HEIGHTS**  
CT ---/----

**ASCONSTRUCTED**



**LEGEND**

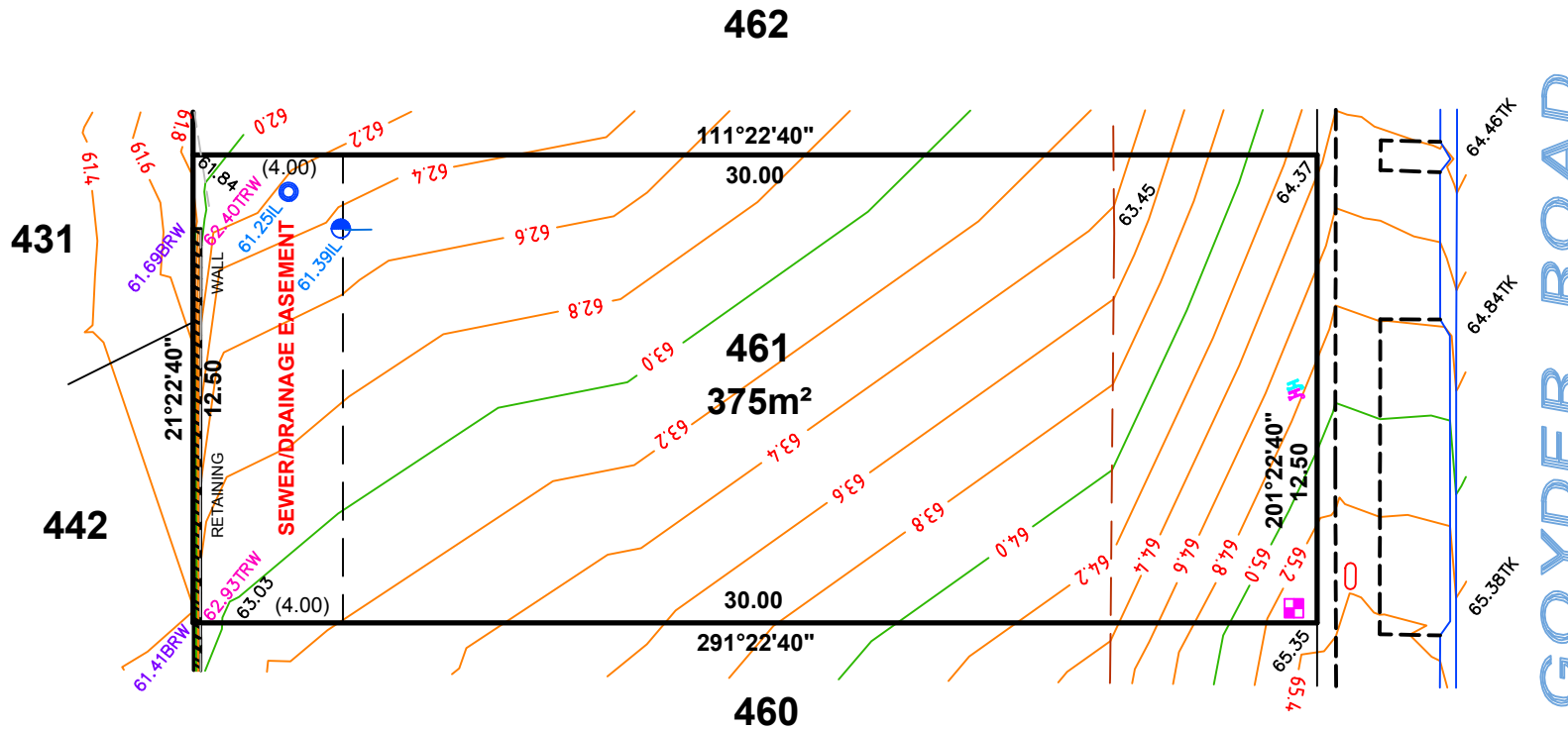
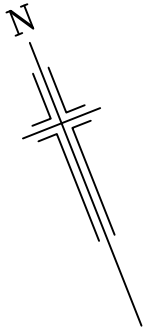
- 87.00TRW TOP RETAINING WALL
- 87.00BRW BOTTOM RETAINING WALL
- WATER METER
- SEWER IP
- STOBIE POLE
- TELSTRA PIT
- S/W GRATING
- SEWER MAN HOLE
- S/W MANHOLE
- LIGHT POLE
- ETSA CONNECTION
- TAP - MAINS
- TAP - RECLAIM
- BOLLARD
- SIGN
- S/W CONNECTION
- FOOTPATH
- SIDE ENTRY PIT
- COMMON SERVICE TRENCH
- DOMESTIC
- SEWER IO
- NON-POTABLE WATER CONN
- TOP OF BANK
- BOTTOM OF BANK

**IMPORTANT**  
SERVICE AND DRIVEWAY LOCATIONS  
ARE SURVEYED. ANY CHANGES WILL  
BE AT THE PURCHASERS EXPENSE.  
PURCHASER: \_\_\_\_\_  
PURCHASER: \_\_\_\_\_  
DATE: \_\_\_\_\_



ALLOTMENT 461 in DEV. NO. 145/D215/12  
in the area named  
**SEAFORD HEIGHTS**  
CT ---/---

**ASCONSTRUCTED**



**LEGEND**

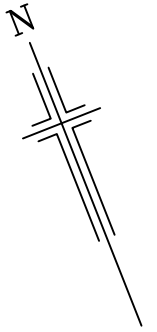
- 87.00TRW TOP RETAINING WALL
- 87.00BRW BOTTOM RETAINING WALL
- WATER METER
- SEWER IP
- STOBIE POLE
- TELSTRA PIT
- S/W GRATING
- SEWER MAN HOLE
- S/W MANHOLE
- LIGHT POLE
- ETSA CONNECTION
- TAP - MAINS
- TAP - RECLAIM
- BOLLARD
- SIGN
- S/W CONNECTION
- FOOTPATH
- SIDE ENTRY PIT
- COMMON SERVICE TRENCH
- DOMESTIC
- SEWER IO
- NON-POTABLE WATER CONN
- TOP OF BANK
- BOTTOM OF BANK

**IMPORTANT**  
SERVICE AND DRIVEWAY LOCATIONS  
ARE SURVEYED. ANY CHANGES WILL  
BE AT THE PURCHASERS EXPENSE.  
PURCHASER: \_\_\_\_\_  
PURCHASER: \_\_\_\_\_  
DATE: \_\_\_\_\_



ALLOTMENT 462 in DEV. NO. 145/D215/12  
in the area named  
**SEAFORD HEIGHTS**  
CT ---/----

**ASCONSTRUCTED**



**CLARK ROAD**

**GOYDER ROAD**

431

462  
677m<sup>2</sup>

461

**SEWER/DRAINAGE EASEMENT**

**IMPORTANT**  
SERVICE AND DRIVEWAY LOCATIONS  
ARE SURVEYED. ANY CHANGES WILL  
BE AT THE PURCHASERS EXPENSE.  
PURCHASER: \_\_\_\_\_  
PURCHASER: \_\_\_\_\_  
DATE: \_\_\_\_\_

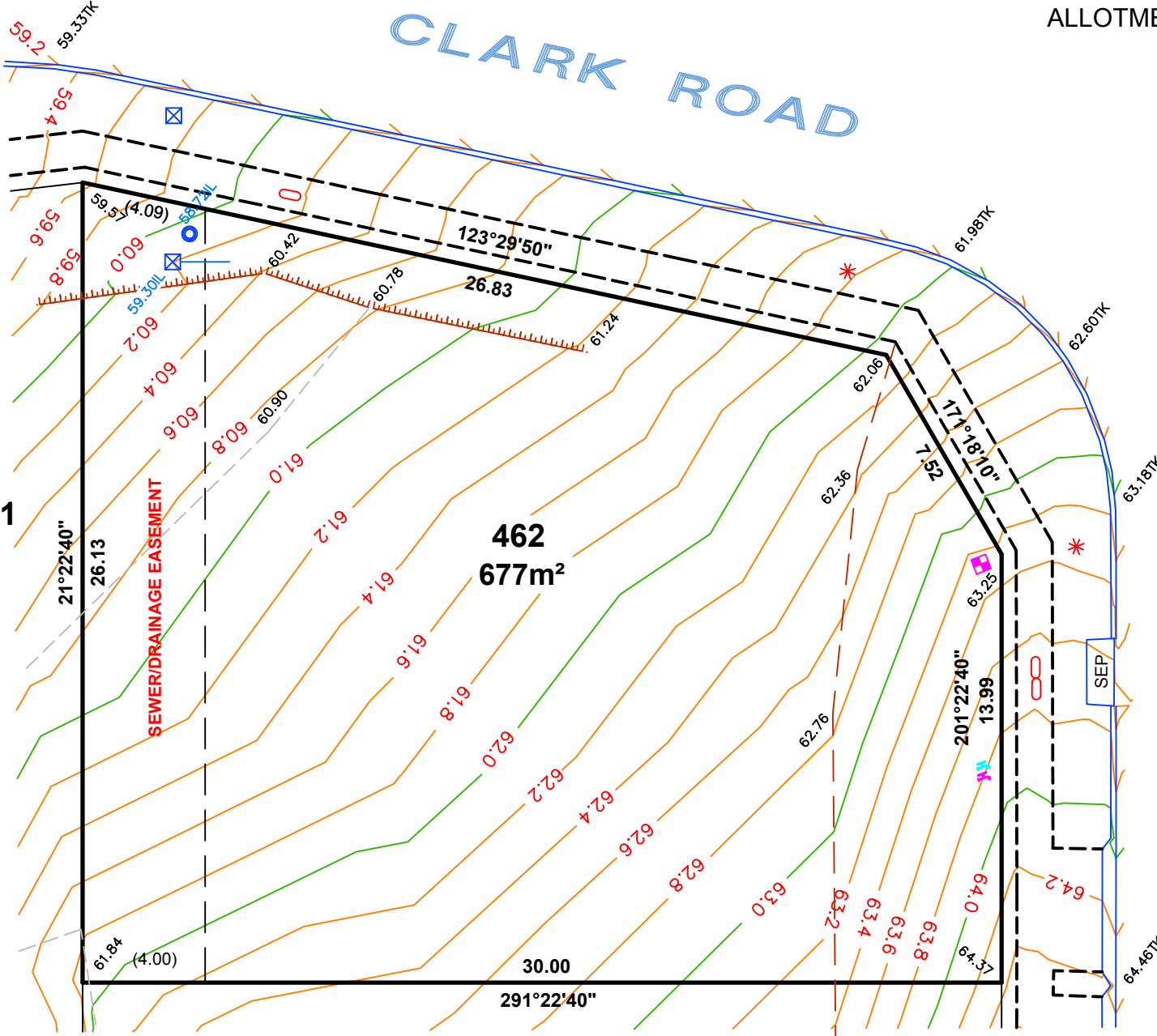
ALEXANDER SYMONDS  
PH 8130 1666

**LEGEND**

- 87.00TRW TOP RETAINING WALL
- 87.00BRW BOTTOM RETAINING WALL
- WATER METER
- SEWER IP
- STOBIE POLE
- TELSTRA PIT
- S/W GRATING
- SEWER MAN HOLE
- S/W MANHOLE
- LIGHT POLE
- E.T.S.A CONNECTION
- TAP - MAINS
- TAP - RECLAIM
- BOLLARD
- SIGN
- S/W CONNECTION
- FOOTPATH
- SIDE ENTRY PIT
- COMMON SERVICE TRENCH
- DOMESTIC
- SEWER IO
- NON-POTABLE WATER CONN
- TOP OF BANK
- BOTTOM OF BANK



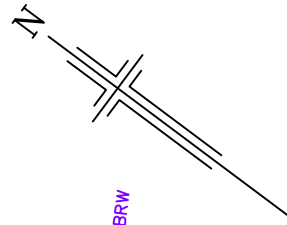
1:200





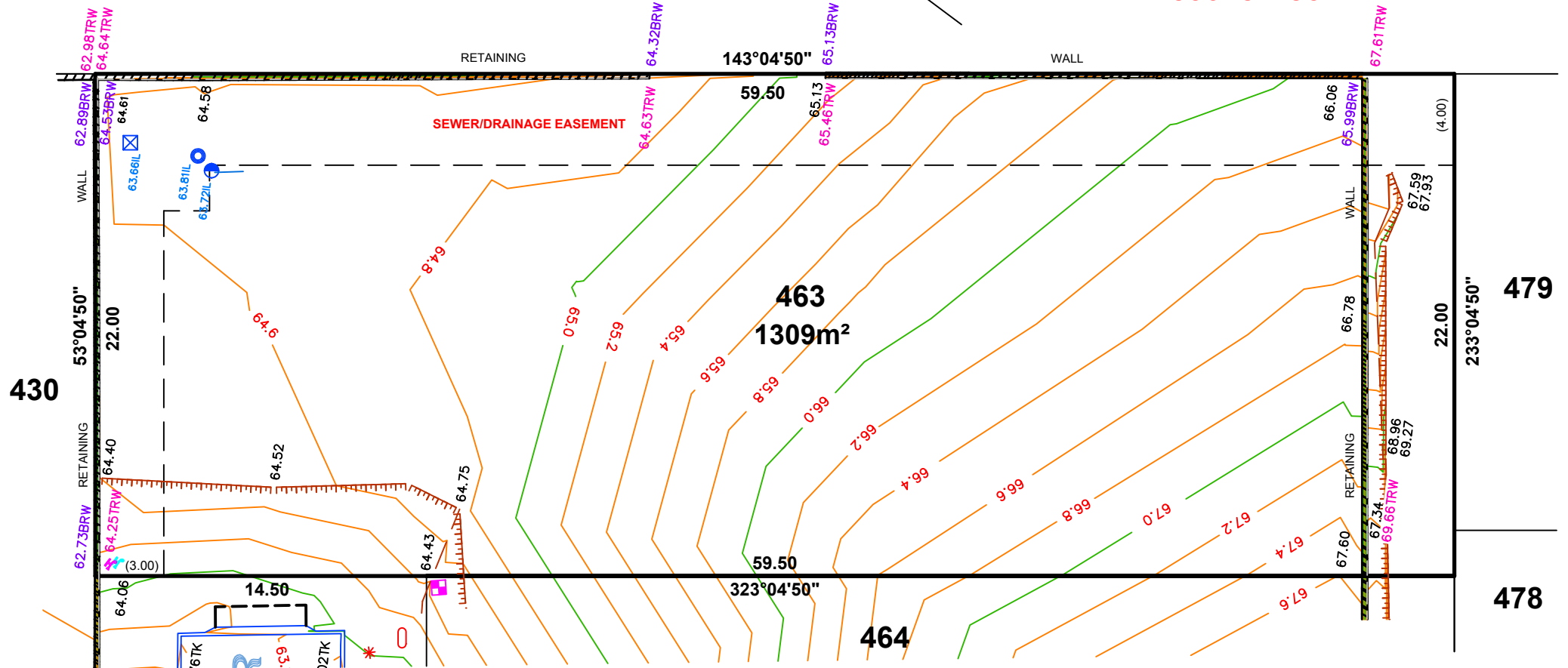


1:250



ALLOTMENT 463 in DEV. NO. 145/D215/12  
in the area named  
**SEAFORD HEIGHTS**  
CT ---/----

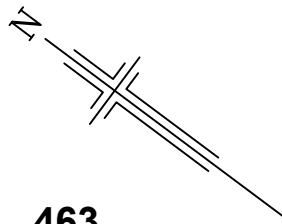
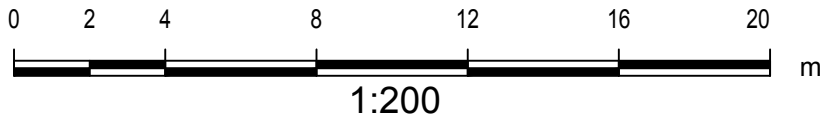
**ASCONSTRUCTED**



**IMPORTANT**  
SERVICE AND DRIVEWAY LOCATIONS  
ARE SURVEYED. ANY CHANGES WILL  
BE AT THE PURCHASERS EXPENSE.  
PURCHASER: \_\_\_\_\_  
PURCHASER: \_\_\_\_\_  
DATE: \_\_\_\_\_

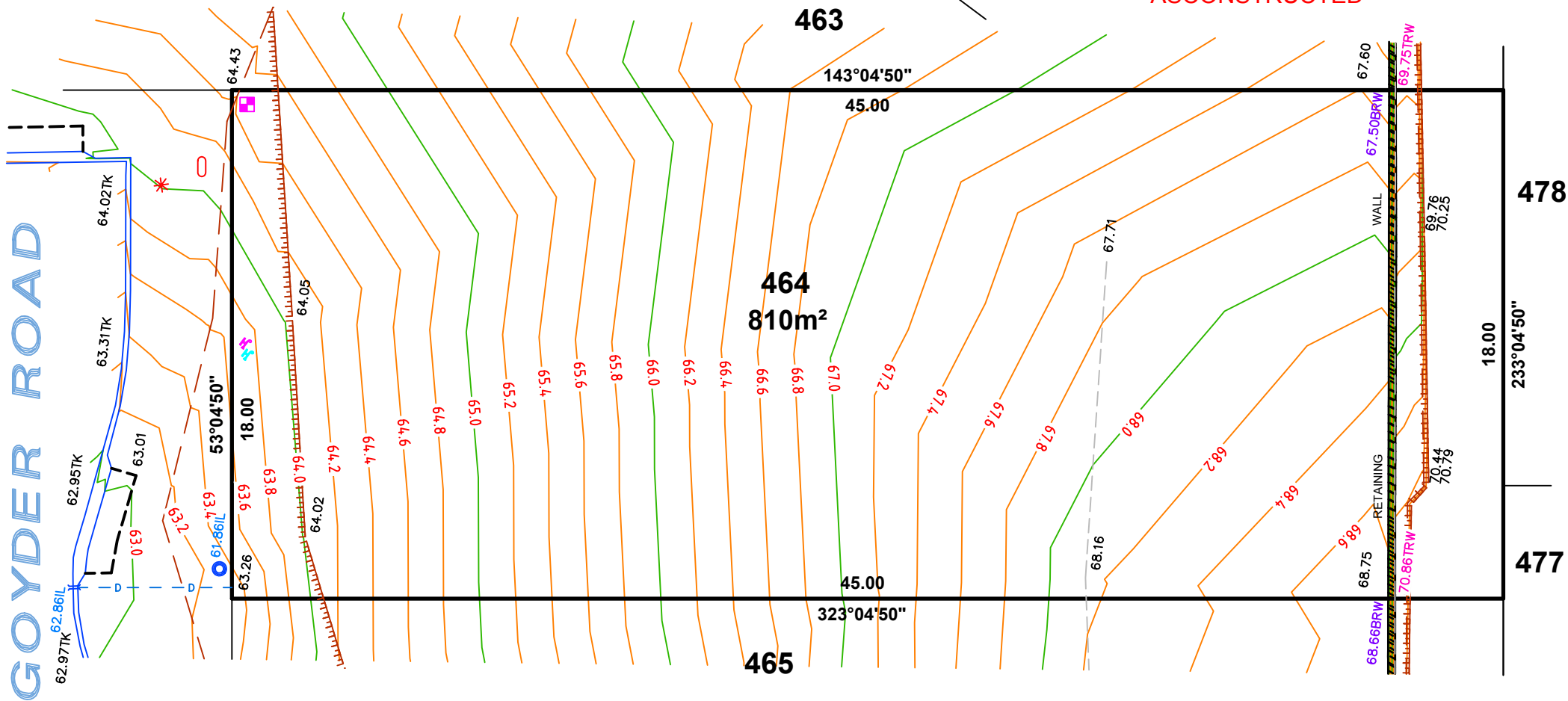
**LEGEND**

- |  |                       |  |                 |  |                        |
|--|-----------------------|--|-----------------|--|------------------------|
| <span style="color: red;">87.00TRW</span>  | TOP RETAINING WALL    |  | S/W MANHOLE     |  | FOOTPATH               |
| <span style="color: blue;">87.00BRW</span> | BOTTOM RETAINING WALL |  | LIGHT POLE      |  | SIDE ENTRY PIT         |
|  | WATER METER           |  | ETSA CONNECTION |  | COMMON SERVICE TRENCH  |
|  | SEWER IP              |  | TAP - MAINS     |  | DOMESTIC               |
|  | STOBIE POLE           |  | TAP - RECLAIM   |  | SEWER IO               |
|  | TELSTRA PIT           |  | BOLLARD         |  | NON-POTABLE WATER CONN |
|  | S/W GRATING           |  | SIGN            |  | TOP OF BANK            |
|  | SEWER MAN HOLE        |  | S/W CONNECTION  |  | BOTTOM OF BANK         |



ALLOTMENT 464 in DEV. NO. 145/D215/12  
in the area named  
**SEAFORD HEIGHTS**  
CT ---/----

**ASCONSTRUCTED**



**GOYDER ROAD**

**464**  
**810m<sup>2</sup>**

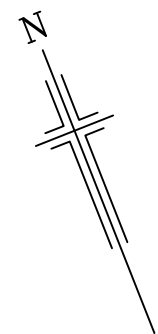
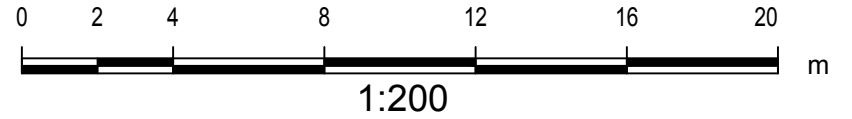
**IMPORTANT**  
SERVICE AND DRIVEWAY LOCATIONS  
ARE SURVEYED. ANY CHANGES WILL  
BE AT THE PURCHASERS EXPENSE.  
PURCHASER: \_\_\_\_\_  
PURCHASER: \_\_\_\_\_  
DATE: \_\_\_\_\_

**LEGEND**

- |          |                       |   |                 |       |                        |
|----------|-----------------------|---|-----------------|-------|------------------------|
| 87.00TRW | TOP RETAINING WALL    | ☒ | S/W MANHOLE     | ---   | FOOTPATH               |
| 87.00BRW | BOTTOM RETAINING WALL | * | LIGHT POLE      | ▭     | SIDE ENTRY PIT         |
| ⊕        | WATER METER           | ■ | ETSA CONNECTION | ---   | COMMON SERVICE TRENCH  |
| ⊙        | SEWER IP              | ⊕ | TAP - MAINS     | - - - | DOMESTIC               |
| ⊥        | STOBIE POLE           | ⊕ | TAP - RECLAIM   | ⊙     | SEWER IO               |
| ○        | TELSTRA PIT           | ● | BOLLARD         | ▽     | NON-POTABLE WATER CONN |
| ▨        | S/W GRATING           | ⊙ | SIGN            | ▨     | TOP OF BANK            |
| ⊙        | SEWER MAN HOLE        | ⊙ | S/W CONNECTION  | ▨     | BOTTOM OF BANK         |

ALLOTMENT 465 in DEV. NO. 145/D215/12  
in the area named  
**SEAFORD HEIGHTS**  
CT ---/---

**ASCONSTRUCTED**

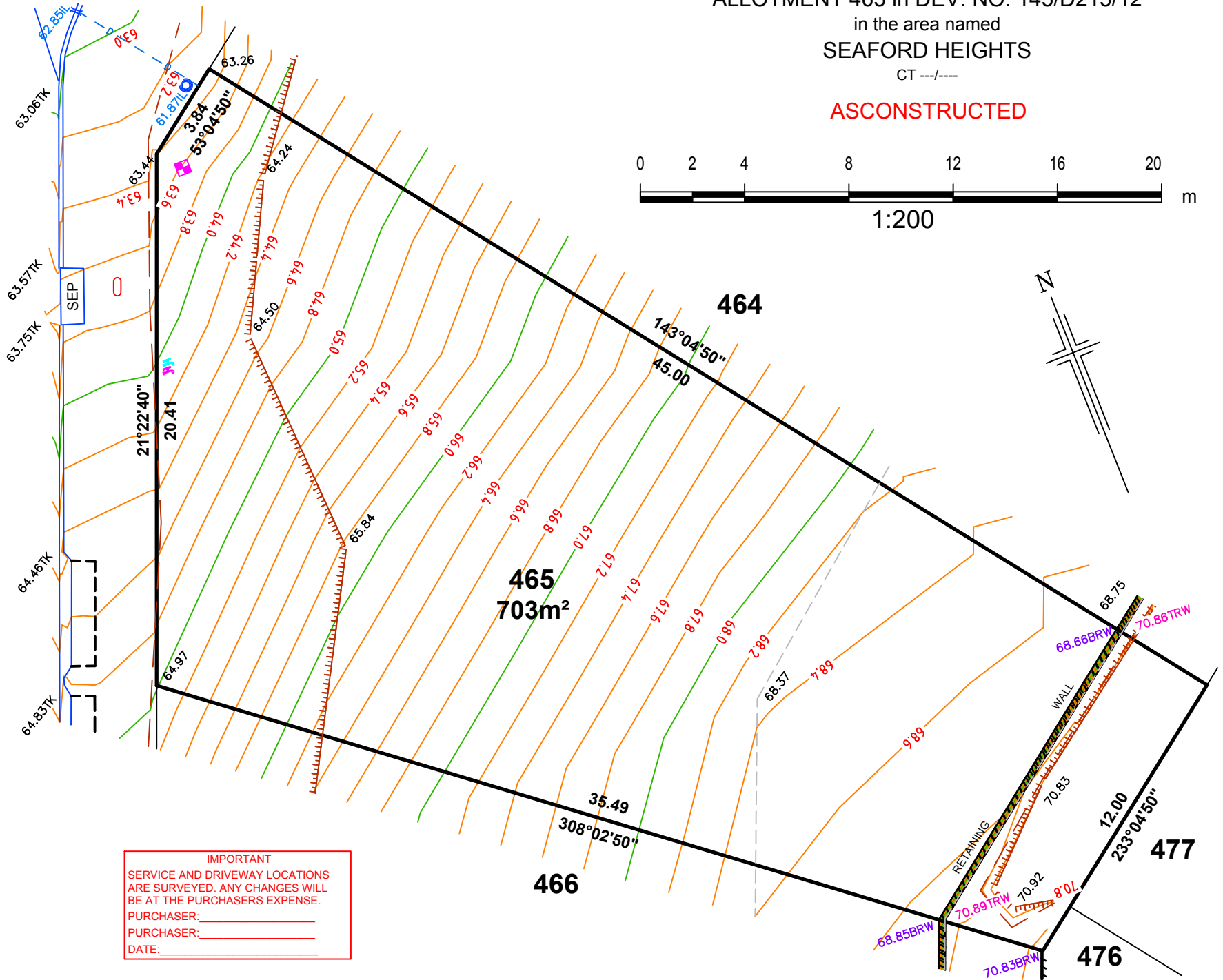


**GOYDER ROAD**

**LEGEND**

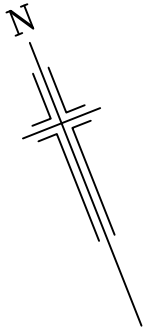
- 87.00TRW TOP RETAINING WALL
- 87.00BRW BOTTOM RETAINING WALL
- WATER METER
- SEWER IP
- STOBIE POLE
- TELSTRA PIT
- S/W GRATING
- SEWER MAN HOLE
- S/W MANHOLE
- LIGHT POLE
- ETSA CONNECTION
- TAP - MAINS
- TAP - RECLAIM
- BOLLARD
- SIGN
- S/W CONNECTION
- FOOTPATH
- SIDE ENTRY PIT
- COMMON SERVICE TRENCH
- DOMESTIC
- SEWER IO
- NON-POTABLE WATER CONN
- TOP OF BANK
- BOTTOM OF BANK

**IMPORTANT**  
SERVICE AND DRIVEWAY LOCATIONS  
ARE SURVEYED. ANY CHANGES WILL  
BE AT THE PURCHASERS EXPENSE.  
PURCHASER: \_\_\_\_\_  
PURCHASER: \_\_\_\_\_  
DATE: \_\_\_\_\_



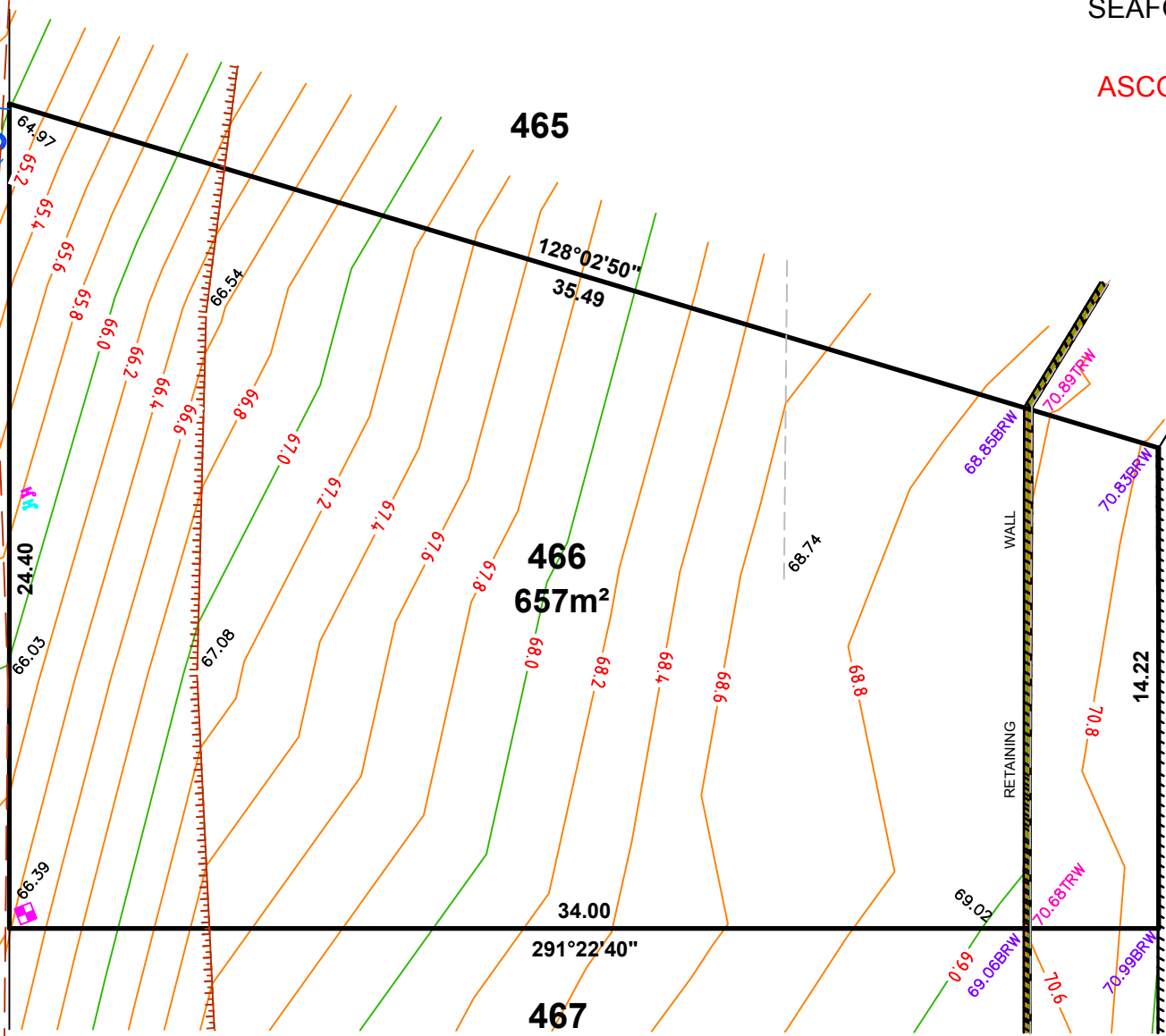
ALLOTMENT 466 in DEV. NO. 145/D215/12  
in the area named  
**SEAFORD HEIGHTS**  
CT ---/---

**ASCONSTRUCTED**



**GOYDER ROAD**

64.46TK  
64.75IL  
65.20TK  
65.77TK  
66.27TK  
66.48TK



**465**

**466**  
657m<sup>2</sup>

**467**

**477**

**476**

**LEGEND**

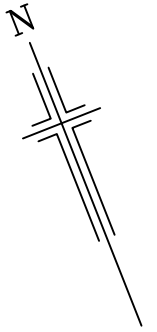
- 87.00TRW TOP RETAINING WALL
- 87.00BRW BOTTOM RETAINING WALL
- Water Meter Symbol WATER METER
- Sewer IP Symbol SEWER IP
- Stobie Pole Symbol STOBIE POLE
- Telstra Pit Symbol TELSTRA PIT
- S/W Grating Symbol S/W GRATING
- Sewer Man Hole Symbol SEWER MAN HOLE
- S/W Manhole Symbol S/W MANHOLE
- Light Pole Symbol LIGHT POLE
- ETSA Connection Symbol ETSA CONNECTION
- Tap - Mains Symbol TAP - MAINS
- Tap - Reclaim Symbol TAP - RECLAIM
- Bollard Symbol BOLLARD
- Sign Symbol SIGN
- S/W Connection Symbol S/W CONNECTION
- Footpath Symbol FOOTPATH
- Side Entry Pit Symbol SIDE ENTRY PIT
- Common Service Trench Symbol COMMON SERVICE TRENCH
- Domestic Symbol DOMESTIC
- Sewer IO Symbol SEWER IO
- Non-Potable Water Conn Symbol NON-POTABLE WATER CONN
- Top of Bank Symbol TOP OF BANK
- Bottom of Bank Symbol BOTTOM OF BANK

**IMPORTANT**  
SERVICE AND DRIVEWAY LOCATIONS  
ARE SURVEYED. ANY CHANGES WILL  
BE AT THE PURCHASERS EXPENSE.  
PURCHASER: \_\_\_\_\_  
PURCHASER: \_\_\_\_\_  
DATE: \_\_\_\_\_

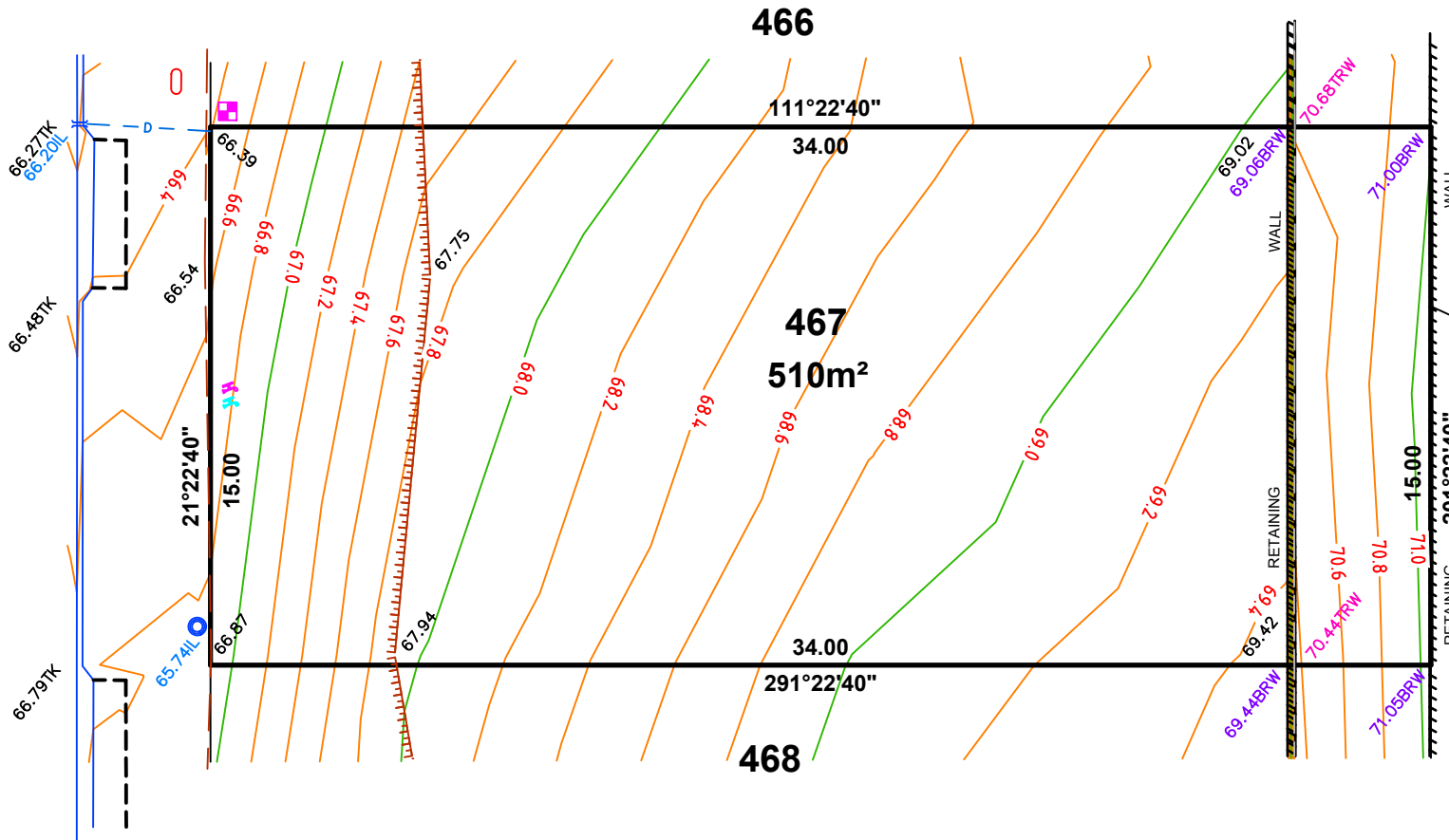


ALLOTMENT 467 in DEV. NO. 145/D215/12  
in the area named  
**SEAFORD HEIGHTS**  
CT ---/---

**ASCONSTRUCTED**



**GOYDER ROAD**



**LEGEND**

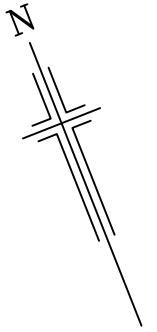
- 87.00TRW TOP RETAINING WALL
- 87.00BRW BOTTOM RETAINING WALL
- Water Meter symbol
- SEWER IP symbol
- STOBIE POLE symbol
- TELSTRA PIT symbol
- S/W GRATING symbol
- SEWER MAN HOLE symbol
- S/W MANHOLE symbol
- LIGHT POLE symbol
- ETSA CONNECTION symbol
- TAP - MAINS symbol
- TAP - RECLAIM symbol
- BOLLARD symbol
- SIGN symbol
- S/W CONNECTION symbol
- FOOTPATH symbol
- SIDE ENTRY PIT symbol
- COMMON SERVICE TRENCH symbol
- DOMESTIC symbol
- SEWER IO symbol
- NON-POTABLE WATER CONN symbol
- TOP OF BANK symbol
- BOTTOM OF BANK symbol

**IMPORTANT**  
SERVICE AND DRIVEWAY LOCATIONS  
ARE SURVEYED. ANY CHANGES WILL  
BE AT THE PURCHASERS EXPENSE.  
PURCHASER: \_\_\_\_\_  
PURCHASER: \_\_\_\_\_  
DATE: \_\_\_\_\_

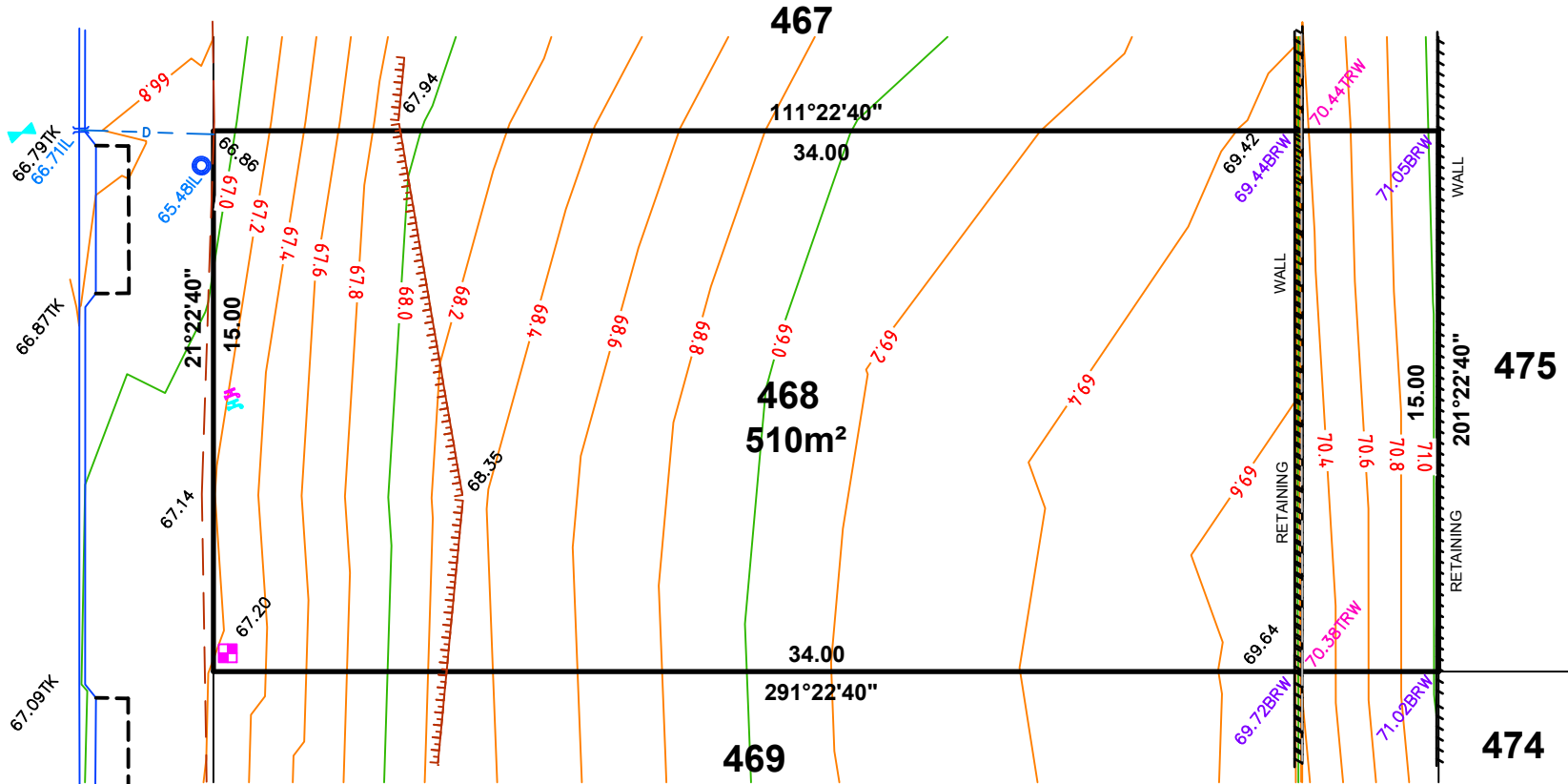


ALLOTMENT 468 in DEV. NO. 145/D215/12  
in the area named  
**SEAFORD HEIGHTS**  
CT ---/---

**ASCONSTRUCTED**



**GOYDER ROAD**



**LEGEND**

- 87.00TRW TOP RETAINING WALL
- 87.00BRW BOTTOM RETAINING WALL
- Water Meter
- SEWER IP
- STOBIE POLE
- TELSTRA PIT
- S/W GRATING
- SEWER MAN HOLE
- S/W MANHOLE
- LIGHT POLE
- ETSA CONNECTION
- TAP - MAINS
- TAP - RECLAIM
- BOLLARD
- SIGN
- S/W CONNECTION
- FOOTPATH
- SIDE ENTRY PIT
- COMMON SERVICE TRENCH
- DOMESTIC
- SEWER IO
- NON-POTABLE WATER CONN
- TOP OF BANK
- BOTTOM OF BANK

**IMPORTANT**  
SERVICE AND DRIVEWAY LOCATIONS  
ARE SURVEYED. ANY CHANGES WILL  
BE AT THE PURCHASERS EXPENSE.  
PURCHASER: \_\_\_\_\_  
PURCHASER: \_\_\_\_\_  
DATE: \_\_\_\_\_



1:200